

ENGINEERING RECOMMENDATION P2 REVIEW

# Monthly Progress Report to 20 March 2016

DCRP P2 WG

**Report No.:** 16011094/PROG 14, Rev. 001

**Document No.:** 16011094/PROG 14

**Date:** 21/03/2016



Project name: Engineering Recommendation P2 Review DNV GL Energy Advisory  
 Report title: Monthly Progress Report to 20 March 2016 5-11 Lavington Street  
 Customer: DCRP P2 WG London,  
 6th Floor, Dean Bradley House SE1 0NZ  
 52 Horseferry Road  
 London  
 SW1P 2AF  
 Contact person: D Spillet  
 Date of issue: 21/03/2016  
 Project No.: 16011094  
 Organisation unit: EA UK  
 Report No.: 16011094/PROG 14, Rev. 001  
 Document No.: 16011094/PROG 14

**Objective:**

This document reports on the monthly progress made by the Consortium for the P2 review project. Progress is reported on each of the work streams that are presently active including:

- estimated progress so far
- forecast time to complete and deliver
- issues encountered
- forecast of potential issues or risks
- forecast of any changes in scope
- Target progress for next month.

The report also includes the latest revision of overall P2 Review project programme (phase 1), the up dated outstanding actions register and the latest version of the general risk register.

The programmed dates for future progress reports are summarised below:

15	Wednesday 20 April 2016	Friday 15 April 2016
16	Wednesday 25 May 2016	Friday 20 May 2016
17	Thursday 23 June 2016	Friday 17 June 2016
18	Wednesday 27 July 2016	Friday 22 July 2016

Rev. No.	Date	Reason for Issue	Prepared by
001	21/03/2016	Consortium monthly progress reporting	C MacKenzie



## Table of contents

1	ACTIVE WORK STREAMS .....	3
2	ACTIVE WORK STREAM SUMMARIES .....	4
2.1	Estimated progress	4
2.2	Forecast time to complete and deliver	4
2.3	Issues encountered	5
2.4	Forecast of potential issues or risks	5
2.5	Forecast of any changes in scope	6
2.6	Target progress for next month	6
3	P2 REVIEW PROJECT PROGRAMME.....	7
4	OUTSTANDING ACTIONS REGISTER.....	8
5	RISK REGISTER.....	9

### Appendices

Appendix A	Project Program
Appendix B	Outstanding actions Register
Appendix C	General Risk Register

## 1 ACTIVE WORK STREAMS

The active work streams and sub work streams are highlighted in Table 1 along with those work streams that are complete or have still to commence.

Work stream/sub-work stream	Deliverable	Activity Status
<b>Work Stream 1</b> -Project Initiation	Issue of initiation paper	Complete.
<b>Work Stream 2</b> - Assessment of P2/6 and Identifying Options for Reform	See sub work stream 2.0 to 2.9 deliverables	Complete
<b>WS2.0</b> Stakeholder interviews (intimate)	Summary report that fed into the WS3 'options' milestone report.	Complete
<b>WS2.1</b> Framework for assessing security performance and measures and characteristic network designs	Summary report that fed into the WS3 'options' milestone report	Complete
<b>WS2.2</b> Service quality and cost effectiveness of the delivered to consumers by the present network design practises	Summary report that fed into the WS3 'options' milestone report	Complete
<b>WS2.3</b> Risk associated with asset replacement, common mode failures and high impact events	Summary report that fed into the WS3 'options' milestone report	Complete
<b>WS2.4</b> Impact of Smart Grid technologies on service quality risk profile	Summary report that fed into the WS3 'options' milestone report	Complete
<b>WS2.5</b> Assessment of impacts of alternative control and operation strategies on security of supply	Summary report that fed into the WS3 'options' milestone report	Complete
<b>WS2.6.</b> Loss inclusive design of distribution networks and impact on security of supply	Summary report that fed into the WS3 'options' milestone report	Complete
<b>WS2.7:</b> Alignment of security of supply standard in distribution networks with other codes and schemes	Summary report that fed into the WS3 'options' milestone report	Complete
<b>WS2.9:</b> Options for future development of distribution network standard including 1st Iteration of the Techno economic Model	Summary report that fed into the WS3 'options' milestone report	Complete
<b>Work Stream 3</b> - P2/6 Options Report	P2/6 Options for reform report	Complete
<b>Work Stream 5</b> Stakeholder Engagement Workshop	Stakeholder Workshop on WS3 options for reform report.	Complete
<b>Work Stream 6</b> - Formal Strategy Consultation for P2/6	Formal Strategy Consultation Paper for P2/6	Ongoing
<b>Work Stream 7</b> – Detailed review and analysis	Tabulated view of all question responses and actions to be taken with regards to final Phase 1 Report.	Still to start
<b>Work Stream 8</b> - Phase 1 report	Phase 1 final report	Still to start
<b>Work Stream 9</b> - Programme work for Phase 2	Work programme for Phase 2 – project plan and supporting documentation	Still to start

Table 1 Summary of Active Work Streams

## 2 ACTIVE WORK STREAM SUMMARIES

### 2.1 Estimated progress

For all active work streams the following table shows the estimated progress this month and the overall progress to date including the estimated percentage completion and key milestones achieved or tasks completed or a brief account of progress.

Work Stream	% completion last month	% completion this month	Key milestones achieved or tasks completed or brief account of progress
WS1	100	100	<ul style="list-style-type: none"> <li>Completed 1 May 2015.</li> </ul>
WS2.0	100	100	<ul style="list-style-type: none"> <li>Completed 12 Jan 2016 with issue of final report.</li> </ul>
WS 2.1	98	100	<ul style="list-style-type: none"> <li>Completed 14 Mar 2016 with issue of final WS2.1 to 2.6 Imperial College report.</li> </ul>
WS2.2	98	100	<ul style="list-style-type: none"> <li>See comments for WS2.1.</li> </ul>
WS2.3	98	100	<ul style="list-style-type: none"> <li>See comments for WS2.1.</li> </ul>
WS2.4	98	100	<ul style="list-style-type: none"> <li>See comments for WS2.1.</li> </ul>
WS2.5	98	100	<ul style="list-style-type: none"> <li>See comments for WS2.1.</li> </ul>
WS2.6	98	100	<ul style="list-style-type: none"> <li>See comments for WS2.1.</li> </ul>
WS2.7	100	100	<ul style="list-style-type: none"> <li>Complete and final report issued.</li> </ul>
WS2.9	100	100	<ul style="list-style-type: none"> <li>Completed on 11 Jan 2016 with issue of draft report.</li> </ul>
WS3	60	100	<ul style="list-style-type: none"> <li>Complete and final report issued on 17 Mar 2016.</li> </ul>
WS5	40	100	<ul style="list-style-type: none"> <li>Completed with industry workshop on 9 March 2016.</li> </ul>
WS6	5	40	<ul style="list-style-type: none"> <li>Planning of consultation documents and questions started.</li> </ul>

Table 2 Summary of active works tream progress

### 2.2 Forecast time to complete and deliver

The following table shows the forecast time to complete and deliver the active work streams.

Work Stream	Forecast calander weeks to complete	Comments
WS1	Completed on 1 May 2015.	
WS2	Completed on 14 March 2016	

WS3	Completed on 17 March 2016	
WS5	Completed on 9 March 2016	
WS6	6 weeks	Depending on agreement with WG. Note, forecast 2 weeks behind programme.

Table 3 Summary of active work stream forecast time to complete

## 2.3 Issues encountered

The following table shows the **recent** issues encountered and estimated delay caused for each active work stream along with potential options to mitigate delays where possible.

Work Stream	Issue encountered	Delay caused	Proposed mitigation	Forecast reduction in delay due to mitigation
WS6	Delays receiving WG agreement on final conclusions and potential recommendations in WS3 options report. This has delayed construction of consultation document for WS6 which is consulting on the conclusions and recommendations from the WS3 options report.	Approx 4 weeks.	Agree consultation document with WG in next 2 weeks.  Also, look to catch up time later in programme.	Reduction to 2 week programme delay overall, possibly reduce further.

Table 4 Summary of active work stream issues encountered

## 2.4 Forecast of potential issues or risks

A forecast of potential issues or risks impacting on delivery timescales, outputs agreed or quality of outputs for each active work stream are recorded in the following table. The table also contains potential options to mitigate any such impacts where possible.

Work Stream	Forecast Issue/Risk	Impact of Risk/Issue	Proposed mitigation	Forecast reduction in impact due to mitigation
WS6	Delays agreeing consultation document with WG, delays consultation release to industry.	Further delay to forecast programme.	Reach agreement with WG as soon as possible.	

Table 5 Summary of active work stream forecast potential issues or risks

## 2.5 Forecast of any changes in scope

The following table includes a forecast of any potential changes in scope for each active work stream that would require discussions with the DCRP P2 WG regarding an agreed change in scope or a budget variation.

Work Stream	Forecast scope change	Reason for change	Cost of potential scope change
WS2	Additional PM effort due to programme delays from late receipt of data and DNO questionnaire responses and interview dates.	Overall P2 programme delay of 5 months, estimated 3.5 months due to delays in receiving RRP data which was outside of the Consortium control. The remaining time has been a mixture of WG and Consortium delays. This will result in additional management and reporting costs due to the programme extension from end of January 2016 until the programme is complete.	The forecast programme has slipped by five months, 3.5 months of this delay has been outside of the Consortium's control. The Consortium has submitted a revised variation request based on project management costs for half the overall delay period, 2.5 months rather than the full 3.5 months.

Table 6 Summary of active work stream forecast scope changes

## 2.6 Target progress for next month

The following table includes a forecast of the intended progress to be made in the next month based on the progress so far.

Work Stream	Planned work targets
WS6	Issue the formal industry consultation paper.

Table 7 Summary of target progress for next month.



### 3 P2 REVIEW PROJECT PROGRAMME

Based on progress to date and forecast completion times, the latest forecast delivery programme is included in Appendix A. Appendix A includes the original programme at the commencement of the project in January 2015 along with the revised programme agreed between the consortium members on 19 June, followed by a further programme forecast made at the beginning of August 2015. The August revised programme reflects the data gathering issues encountered and the estimated time required completing the WS2 peer reviews at key stages.

The Nov 17 revised programme considered the delays to issuing the WS2.9 draft option report that through WS3 became the final options report for issue to the wider industry prior to the WS6 consultation. WS3 did commence with a WG workshop at the October 27 monthly WG meeting and the WS3 final options report was issued on 17 March 2016.

At the Dec 18<sup>th</sup> 2015 WG meeting the WS5 stakeholder event was confirmed by ENA as 9 March 2016. Based on this date the programme was revised in January 2016 and is included in Appendix A.

The programme will be revisited when the WS6 consultation document is issued to industry.





## **4 OUTSTANDING ACTIONS REGISTER**

The outstanding actions register is provided in Appendix B.



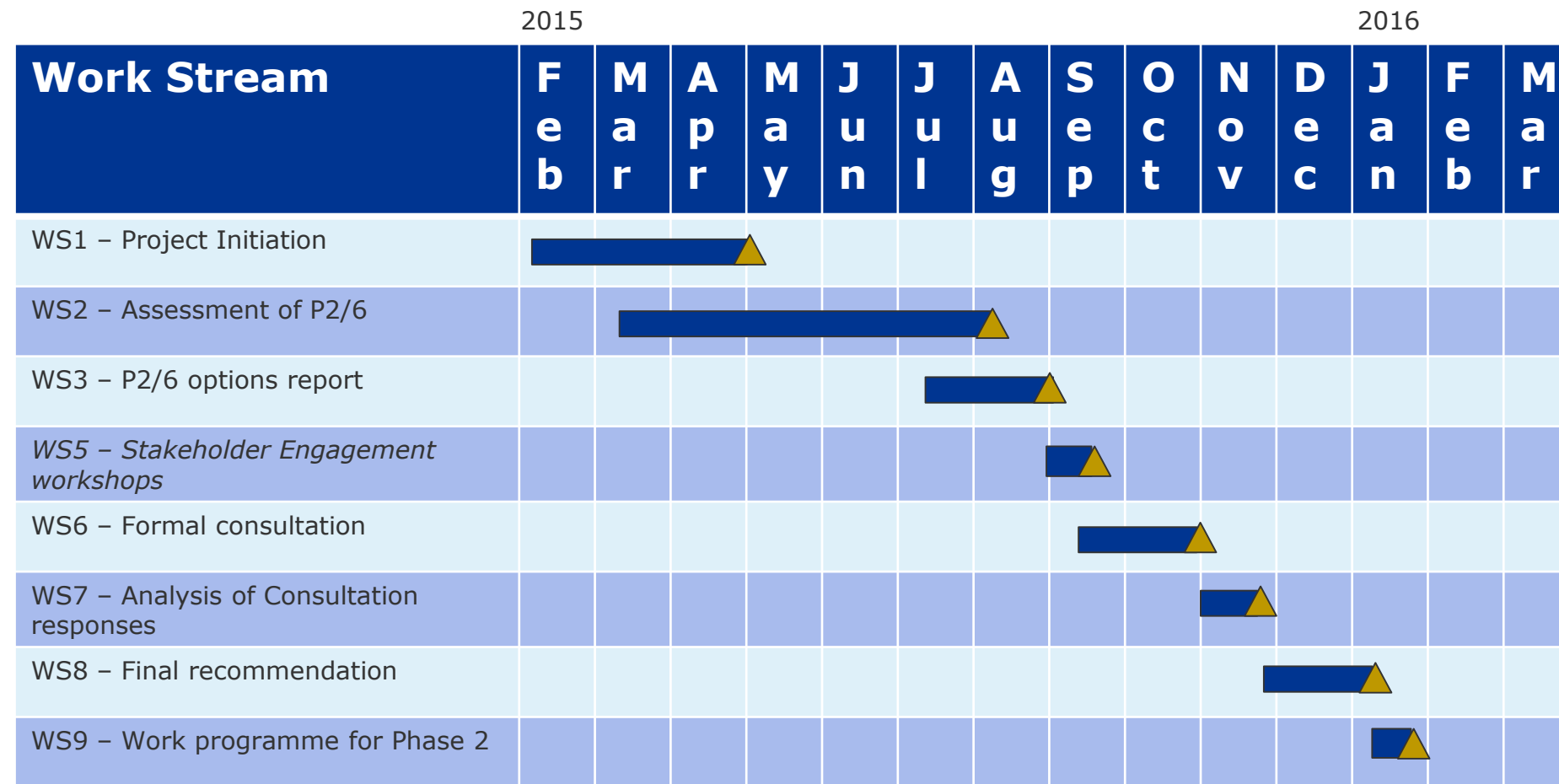
## 5 RISK REGISTER

The latest generic register of risks to programme delivery and mitigating controls is provided in Appendix C. The detailed risks and mitigation measures are provided in Table 5 in section 2.4.



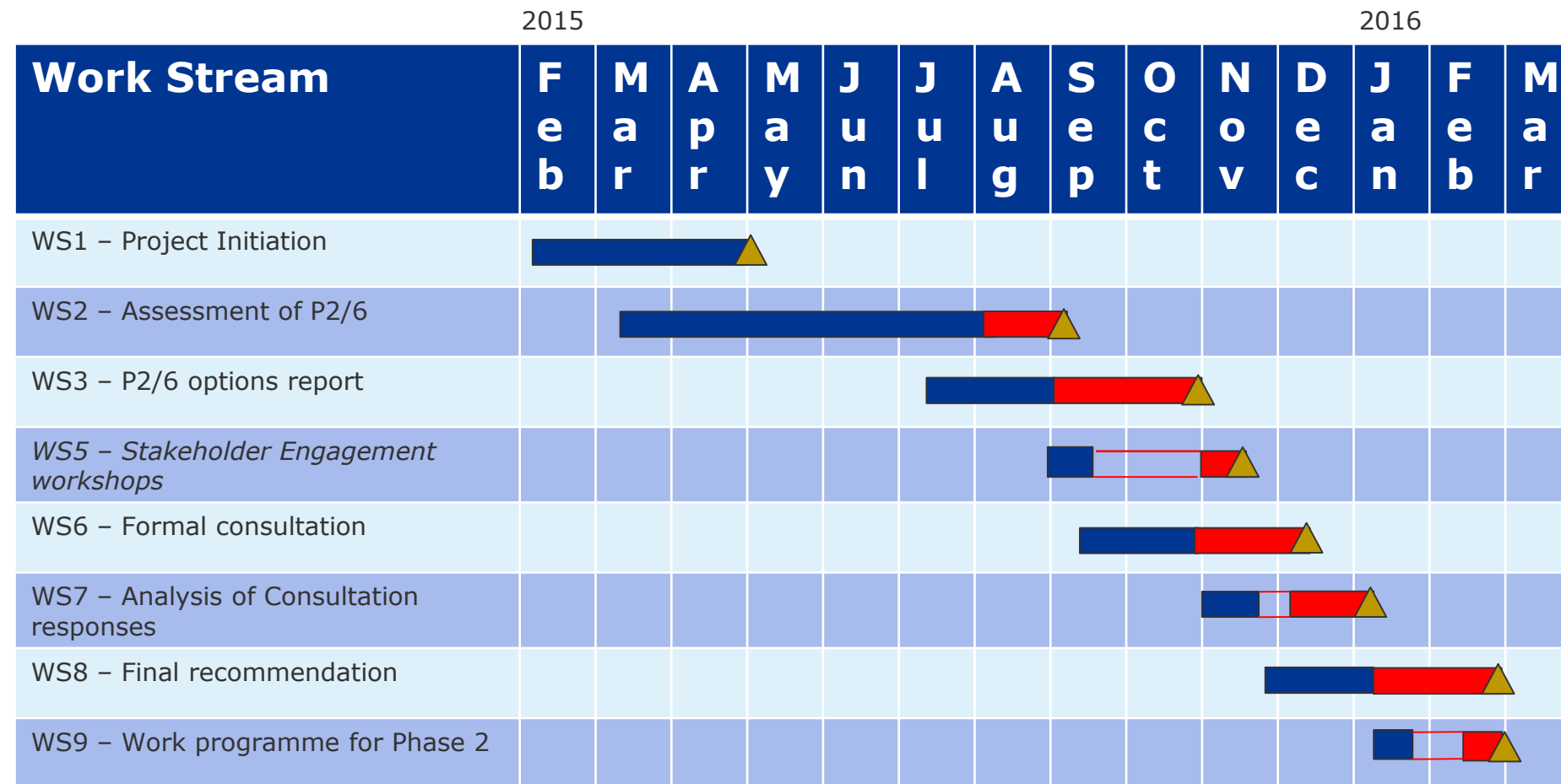
## **Appendix A      Project Programme**

The original (January 2015) high level summary programme is shown below.



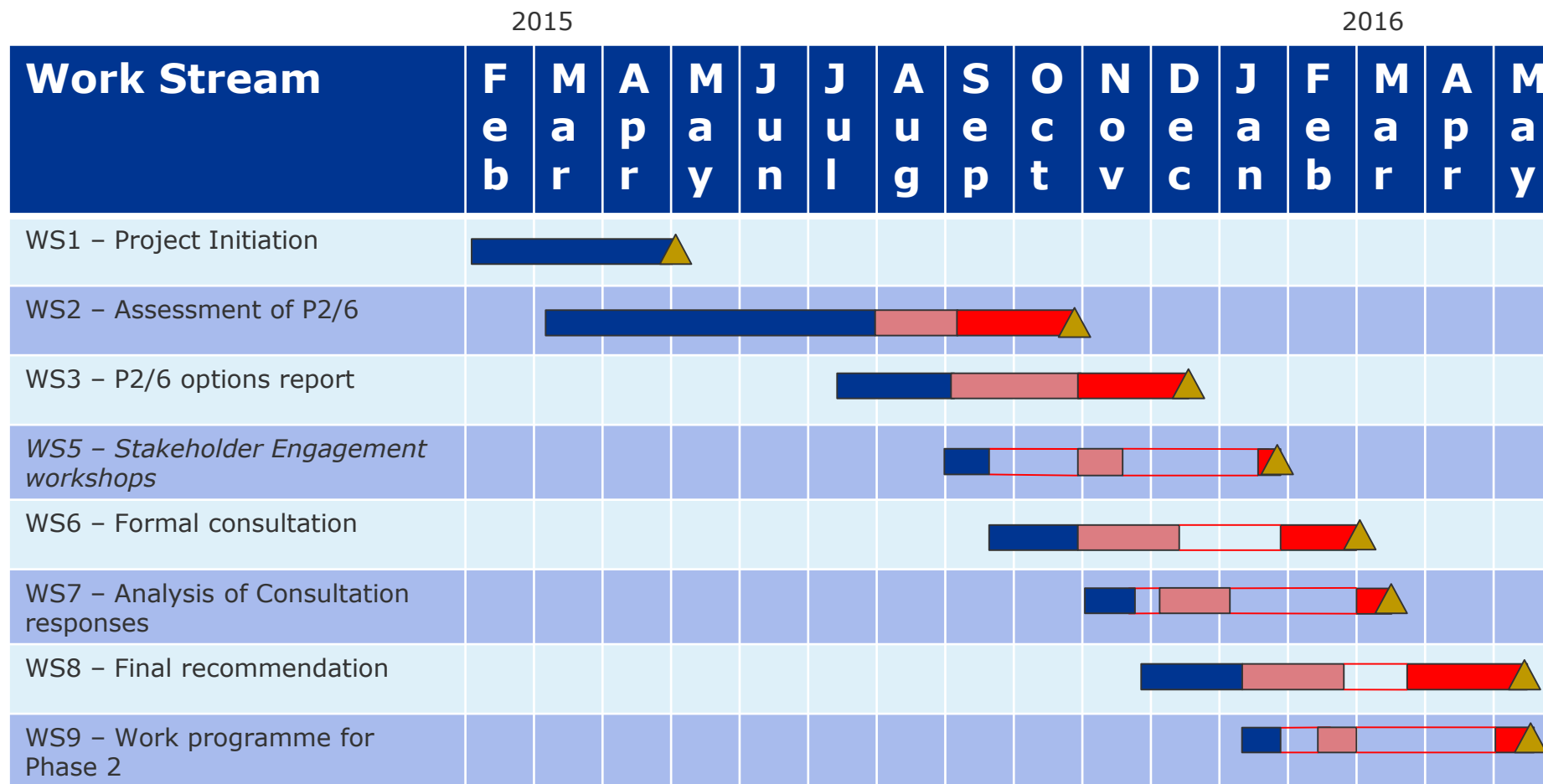
▲ = defined deliverable

The programme review carried out on June 19 2015 has resulted in the revised programme below. Revisions are coloured red.



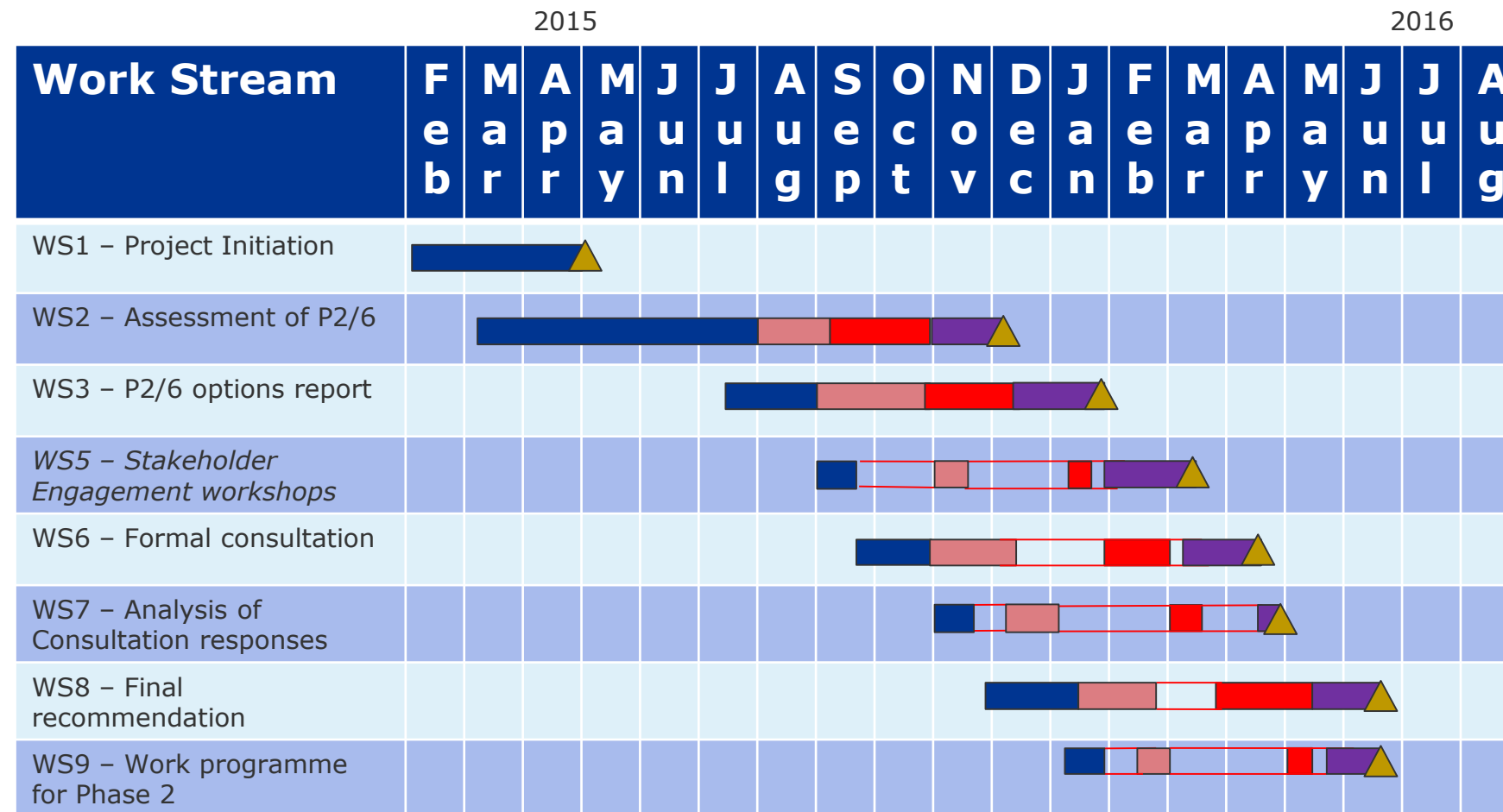
▲ = defined deliverable

The programme review carried out in August 2015 has resulted in the revised programme below. The June revisions are coloured pink and the August revisions are coloured red.



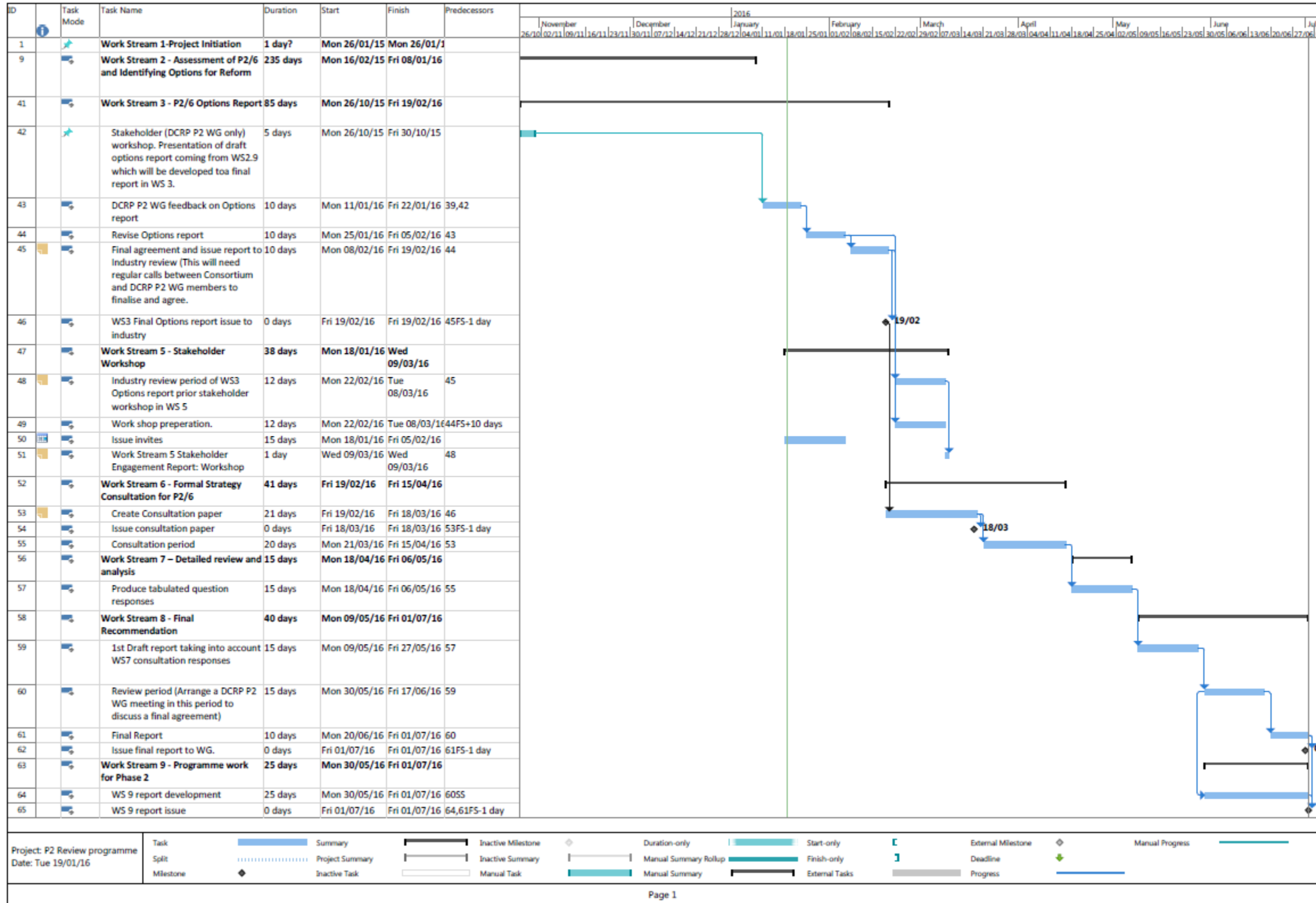
▲ = defined deliverable

The programme review carried out in November 2015 has resulted in the revised programme below. The June programme revisions are coloured pink, the August revisions are coloured red and the November revisions are coloured purple.



▲ = defined deliverable

The programme review carried out in January 2016 has resulted in the revised remaining programme below.







## **Appendix B      Outstanding Actions Register**

Outstanding actions following meeting on 3 March 2016.



There are no outstanding actions at 20 March 2016.



**Appendix C      Risk Register**

ENA ER P2 Review

Risk analysis matrix

DNV·GL

Cells contain formulas and will be calculated. Do not update these cells.

Text Blue text represents sample text and should be ignored. This row is not included in graph and sort algorithm.

Acceptable risk score =

Use this page to register all risk factors currently known. Use a scale of 1- 5 (highest) to indicate probability and consequence for each factor.

\*Probability  
\*Consequence  
Risk score = P x C  
Risk score last period

Sort list to identify top 5 risks

Id	RBS	Risk description	P	C	Score	Last period	Action	Responsible
3	Project Management	Timescales slip on work streams and project end date or work cannot be completed within timescales	3	4	12		PM will work with ENA and team to revise the programme where possible.	PM
4	Technical	Work stream outputs do not deliver the expected results	2	4	8		PM and team will work with ENA to address any such issues as they occur.	PM
5	Technical	Data is delayed or unavailable (for techno-economic model)	4	3	12		All consortium members to make PM aware of issues. PM to assist with data from stakeholders.	PM
6	Project Management	Working together is difficult as partners are physically remote	2	2	4		PM to hold regular meetings with consortium partners to review any issues.	PM
1	External	Access to Stakeholders	1	3	3		Liaise closely with ENA, make sure process is transparent (robust stakeholder engagement process)	PM
7	Organizational	Insufficient resource or expertise within consortium to undertake work	1	3	3		Team includes duplicate resources	PM
8	Technical	Peer review process by DCRP P2 WG takes excessive time to reach a point where all DCRP P2 WG members are have with the robustness of data inputs and outputs from the IC analysis.	4	3	12		A P2 sub group has been put in place to speed up the peer review process	DCRP P2 WG chair.
9	External	WG members cannot agree final recommendations for WS3 option report prior to WS5 Industry stake holder event.	3	4	12		WS3 options report could be delivered just after WS5 workshop. However, greater than 15 day delay will delay overall programme.	DCRP P2 WG chair.

Risk register embedded file, used for amendments.



Risk Register V  
004.xlsx



## **About DNV GL**

Driven by our purpose of safeguarding life, property and the environment, DNV GL enables organizations to advance the safety and sustainability of their business. We provide classification and technical assurance along with software and independent expert advisory services to the maritime, oil and gas, and energy industries. We also provide certification services to customers across a wide range of industries. Operating in more than 100 countries, our 16,000 professionals are dedicated to helping our customers make the world safer, smarter and greener.