

ENGINEERING RECOMMENDATION P2 REVIEW

Monthly Progress Report to 20 Mar 2015

DCRP P2 WG

Report No.: 16011094/PROG 2, Rev. 000

Document No.: 16011094/PROG 2

Date: 26/3/2015



Project name:	Engineering Recommendation P2 Review	DNV GL Energy Advisory
Report title:	Monthly Progress Report to 20 Mar 2015	PSP UK
Customer:	DCRP P2 WG	Palace House
	6th Floor, Dean Bradley House	3 Cathedral Street
	52 Horseferry Road	London
	London	SE1 9DE
	SW1P 2AF	Tel: +44 (0) 203 170 8165
Contact person:	D Spillet	04478894
Date of issue:	26/3/2015	
Project No.:	16011094	
Organisation unit:	EA UK	
Report No.:	16011094/PROG 2, Rev. 000	
Document No.:	16011094/PROG 2	

Objective:

This document reports on the monthly progress made by the Consortium for the P2 review project. Progress is reported on each of the work streams that are presently active including:

- estimated progress so far
- forecast time to complete and deliver
- issues encountered
- forecast of potential issues or risks
- forecast of any changes in scope
- Target progress for next month.

The report also includes the latest revision of overall P2 Review project programme (phase 1), the up dated outstanding actions register and the latest version of the risk register.

The programmed dates for future progress reports are summarised below:

No.	DCRP P2 WG Meeting Date	Issue Monthly Progress Report
3	Monday 1 May	Friday 24 Apr
4	Wednesday 27 May	Friday 22 May
5	Monday 22 June	Friday 20 June
6	Wednesday 29 July	Friday 24 July
7	Wednesday 19 Aug	Friday 14 Aug
8	Wednesday 23 Sept	Friday 18 Sept
9	Wednesday 27 Oct	Friday 23 Oct
10	Wednesday 25 Nov	Friday 20 Nov
11	Friday 18 Dec	Friday 11 Dec

Rev. No.	Date	Reason for Issue	Prepared by
000	26/3/2015	Consortium monthly progress reporting	C MacKenzie



Table of contents

1	ACTIVE WORK STREAMS	3
2	ACTIVE WORK STREAM SUMMARIES	4
2.1	Estimated progress	4
2.2	Forecast time to complete and deliver	5
2.3	Issues encountered	5
2.4	Forecast of potential issues or risks	5
2.5	Forecast of any changes in scope	6
2.6	Target progress for next month	6
3	P2 REVIEW PROJECT PROGRAMME	8
4	OUTSTANDING ACTIONS REGISTER	9
5	RISK REGISTER	10

Appendices

Appendix A	Project Program
Appendix B	Outstanding actions Register
Appendix C	Risk Register

1 ACTIVE WORK STREAMS

The active work streams and sub work streams are highlighted in Table 1 along with those work streams that are complete or have still to commence.

Work stream/sub-work stream	Deliverable	Activity Status
Work Stream 1 -Project Initiation	Issue of initiation paper	Active
Work Stream 2 - Assessment of P2/6 and Identifying Options for Reform		Initial start made.
WS2.0 Stakeholder interviews (intimate)	A summary report covering key highlights from the stakeholder engagement/interview activities.	Still to start
WS2.1 Framework for assessing security performance and measures and characteristic network designs	Framework for the development of future network design standards	Started
WS2.2 Service quality and cost effectiveness of the delivered to consumers by the present network design practises	Summary report that will feed into the 'options' milestone report	Still to start
WS2.3 Risk associated with asset replacement, common mode failures and high impact events	Summary report that will feed into the 'options' milestone report	Still to start
WS2.4 Impact of Smart Grid technologies on service quality risk profile	Summary report that will feed into the 'options' milestone report	Still to start
WS2.5 Assessment of impacts of alternative control and operation strategies on security of supply	Summary report that will feed into the 'options' milestone report	Still to start
WS2.6. Loss inclusive design of distribution networks and impact on security of supply	Summary report that will feed into the 'options' milestone report	Still to start
WS2.7: Alignment of security of supply standard in distribution networks with other codes and schemes	Summary report that will feed into the 'options' milestone report	Still to start
WS2.9: Options for future development of distribution network standard including 1st Iteration of the Techno economic Model	Summary report that will feed into the 'options' milestone report	Still to start
Work Stream 3 - P2/6 Options Report	P2/6 Options Report	Still to start
Work Stream 5 Stakeholder Engagement Report: Workshop	Stakeholder Workshop Report.	Still to start
Work Stream 6 - Formal Strategy Consultation for P2/6	Formal Strategy Consultation Paper for P2/6	Still to start
Work Stream 7 – Detailed review and analysis	Tabulated view of all question responses and actions to be taken with regards to final Phase 1 Report.	Still to start
Work Stream 8 - Phase 1 report	Phase 1 final report	Still to start
Work Stream 9 - Programme work for Phase 2	Work programme for Phase 2 – project plan and supporting documentation	Still to start

Table 1 Summary of Active Work Streams

2 ACTIVE WORK STREAM SUMMARIES

2.1 Estimated progress

For all active work streams the following table shows the estimated progress this month and the overall progress to date including the estimated percentage completion and key milestones achieved or tasks completed or a brief account of progress.

Work Stream	% completion last month	% completion this month	Key milestones achieved or tasks completed or brief account of progress
WS1	30	50	<ul style="list-style-type: none"> • Progress report 2 submitted. • DCRP P2 WG meeting 2 completed including minutes. • Stakeholder engagement plan drafted and presented at DCRP P2 WG meeting on 26 Feb 2015. Plan now updated. • The overall programme has been reviewed and revised and agreed with consortium members. Changes were around WS1 and WS2. The overall WS2 finish date is unchanged and hence the overall programme for Phase 1 still finishes in January 2016. WS2.0 which covers the stakeholder interviews has still to be finalised but will not impact on the other WS2 sub workstreams in the early stages. • Draft list of WS2 questions and data requests for DCRP P2 WG members to respond to was submitted on 25 Feb and an over view of why the data is required given by G Strbac at DCRP P2 WG meeting on 26 Feb. Imperial is now looking for responses to the data request to help set up models for WS2. • Draft Project Initiation Paper (PIP) completed and issued to ENA on 23 March who circulated to the DCRP P2 WG members on 23 March for their review prior to WS1 Workshop 1 on 27 March when feedback on the PIP will be discussed with the DCRP P2 WG. • Planning for WS1 Workshop 2 on 1 May commenced. Flier drafted, numbers estimated, invitee list started, slide pack started, possible breakout session questions started, venue requirements discussed with ENA.
WS2	0	30	<p>Imperial college is making good progress setting up the various models required for the various WS2 analysis. Imperial College now require responses to the data requests already made, see WS1 above.</p>

Table 2 Summary of active works tream progress

2.2 Forecast time to complete and deliver

The following table shows the forecast time to complete and deliver the active work streams.

Work Stream	Forecast calendar weeks to complete	Comments
WS1	5	Draft stakeholder engagement plan shows Workshop 1 on 27 th March with Workshop 2 on 1 st May. This would complete WS1.
WS2	22	Imperial College started work on WS2 to set up the various models that will be required. WS2 is programmed for completion on 7 th August 2015.

Table 3 Summary of active work stream forecast time to complete

2.3 Issues encountered

The following table shows the issues encountered and estimated delay caused for each active work stream along with potential options to mitigate delays where possible.

Work Stream	Issue encountered	Delay caused	Proposed mitigation	Forecast reduction in delay due to mitigation
WS1	Issues identifying individuals in DNO and TO organisations and some other organisations to invite to workshop on 1 May.	None yet.	DNV GL will collaborate with ENA and DCRP P2 WG to get details for DNO and TO invitees and contact other organisations to identify correct person to invite.	To keep to programme of workshop on 1 May.
WS2	WS2.0 Stakeholder interviews is taking time to start.	None.	The interviews are part of the engagement process and this does not impact on starting the other WS2 sub workstreams. In terms of data for WS2 the main data is on the list already provided to the DCRP P2 WG. The interviews will supplement this with data that is more about operational practices, how the present standard is used etc. and comes into play later in the WS2 tasks and into WS 3.	None required at present.

Table 4 Summary of active work stream issues encountered

2.4 Forecast of potential issues or risks

A forecast of potential issues or risks impacting on delivery timescales, outputs agreed or quality of outputs for each active work stream are recorded in the following table. The table also contains potential options to mitigate any such impacts where possible.



Work Stream	Forecast Issue/Risk	Impact of Risk/Issue	Proposed mitigation	Forecast reduction in impact due to mitigation
WS1	Issues identifying individuals in DNO and TO organisations and some other organisations to invite to workshop on 1 May.	Delay the workshop on 1 May. This will not delay the overall programme as WS2 can continue without this for some time.	DNV GL will collaborate with ENA and DCRP P2 WG to get details for DNO and TO invitees and contact other organisations to identify correct person to invite.	To keep to programme of workshop on 1 May. However, delaying the workshop by up to a few weeks should not be an issue to the overall programme.
WS2	Lack of response to data request list submitted to the DCRP P2 WG on 25/2/2015	Could start to impact on some of the WS2 sub workstreams	Consortium would like to discuss the best way to address this with the DCRP P2 WG.	None as yet.

Table 5 Summary of active work stream forecast potential issues or risks

2.5 Forecast of any changes in scope

The following table includes a forecast of any potential changes in scope for each active work that would require discussions with the DCRP P2 WG regarding an agreed change in scope or a budget variation.

Work Stream	Forecast scope change	Reason for change	Cost of potential scope change
WS1	None to report		
WS2	None to report		

Table 6 Summary of active work stream forecast scope changes

2.6 Target progress for next month

The following table includes a forecast of the intended progress to be made in the next month based on the progress so far.

Work Stream	Planned work targets
WS1	Complete Workshop 1 on 27 March with DCRP P2 WG. Finalise PIP. Finalise plans for 1 May Stakeholder event. Complete invitee list and flier for 1 May event and issue invites with PIP by 2 April. Complete slide pack for 1 May event.
WS2.0	Set-up interviews with the key DNO staff. Develop questionnaires for interviews Start to conduct interviews Plan out interview process for wider stakeholders (non DNO).
WS2.1	Identify key network types and corresponding range of reliability parameters of network assets needed to assess the network reliability performance. Finalise remaining modelling approaches – including generation driven network investment. Prepare technical questions for the workshop.
WS2.2	Select initial samples of real distribution networks. Evaluate estimated networks reliability performances for initial samples of real representative distribution networks.
WS2.3	Agree characteristic scenarios for asset replacement, common-mode failures and high impact events.
WS2.4	Define and carry out initial case studies demonstrating the impact of distributed energy resources (DER) on security of supply.
WS2.5	Prepare technical questions, for workshop, relevant to real time network operation and control with focus on security of supply.
WS2.6	Establish relevant cases and corresponding data for assessing the impact of loss inclusive design on reliability.

Table 7 Summary of target progress for next month.



3 P2 REVIEW PROJECT PROGRAMME

Based on progress to date and forecast completion times, the latest forecast delivery programme is included in Appendix A.



4 OUTSTANDING ACTIONS REGISTER

The outstanding actions register is provided in Appendix B.



5 RISK REGISTER

The latest register of risks to programme delivery and mitigating controls is provided in Appendix C.

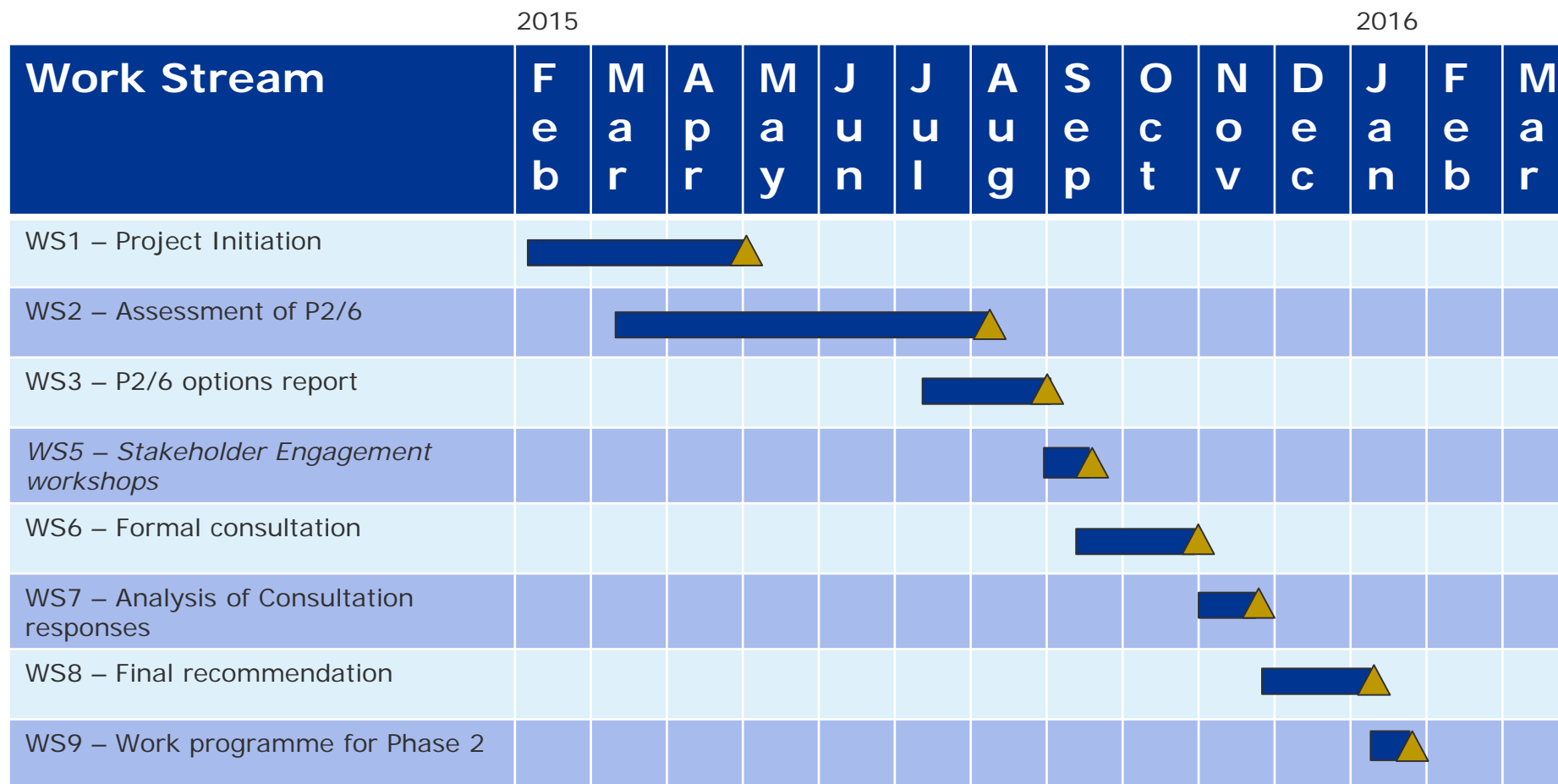




Appendix A Project Programme



The high level summary programme is shown below.



▲ = defined deliverable





Appendix B Outstanding Actions Register



Action/Responsible/Due Date

Recap on the key P2 study issues

What has changed over the last 18 months

1	Consortium to consider the impact of relevant LCNF projects now they are more mature, special examples could include Electricity North West 's C2C project and DSR related projects in general on the P2 review. WS 2 activity for NERA and Imperial.	GS, RD/Consortium PM/during workstream 2.
2	RIO price control period commences with a new interruption incentive scheme, etc. Consortium to consider impacts during WS 2 techno-economic modelling. WS 2 activity for NERA and Imperial	GS, RD /Consortium PM/during workstream 2.
3	Smart Grid Forum WS 7 project, DCRP P2 WG to provide Consortium with update on project outputs that could have an impact on the P2 review. Based on meeting on 26 Feb 2015 MK is to provide the presently available report setting out the WS7 project, followed by a soon to be published report first WS7 report setting out the scope.	The available WS7 report was provided by ENA on 2 March 2015. Action complete . The first WS7 report to be provided by DCRP P2 WG by 30 March 2015 subject to report release date.
	Consortium to consider impact of WS7 information provided by DCRP P2 WG on P2 review. WS 2 activity for NERA and Imperial.	GS, RD /Consortium PM/during workstream 2.
4	Losses has been raised as a key issue by Ofgem driven by EU directives. Consortium to review and include in techno-economic assessments. WS 2 activity for NERA and Imperial.	GS, RD /Consortium PM/during workstream 2.
5	Any issues relating to supply security in the latest ENTSO-E 10 year plan should be considered for potential impact on the P2 review. WS 2 activity for NERA and Imperial.	GS, RD /Consortium PM/during workstream 2.

Consortium proposals to conduct the P2 review

9	DCRP P2 WG to amend and approve list of stakeholders to be invited to the outreach event and send invites once date is confirmed with the Consortium (date allowing for 6 week notice period.	DCRP P2 WG/DS/ by 16 Feb 2015.
10	Consortium to revise programme considering requirements for WS1 and outreach event notice period.	CMac/Consortium PM/by 23 Feb 2015 In draft form subject to agreement within consortium. New action date by 16 March 2015.



Action/Responsible/Due Date

11	DCRP P2 WG is to advise any other party that they would wish to peer review the modelling inputs and out puts in anticipation of a public consultation on proposals that may be justified (in part) by evidence produced using Imperial’s techno-economic model.	DCRP P2 WG/DS/ by 23 Feb 2015.
----	--	--------------------------------

Overall governance

12	Consortium to ensure all corespondance with DCRP P2 WG comes from the Consortium PM to David Spillet as the single points of contact in each organisation.	All consortium members/Consortium PM/ongoing.
----	--	---

Action/Responsible/Due Date

Overall governance

2.1	Regarding actions not carried out by the DCRP P2 WG, CM is to chase DS to resolve these issues.	CM/CM/ Ongoing
-----	---	----------------

Stakeholder Engagement

2.2	ABi is to prepare a half page publicity flyer for workshop 2 by mid-March covering what the event is, aims and who should attend.	ABi/ ABi/ 16 March 2015
-----	---	-------------------------

2.3	DS to provide the consortium with the names and contact details of the key individuals at each DNO who should be interviewed directly as part of work stream 2 (i.e. individuals responsible for setting policy for the DNO’s network planning teams to follow).	DS/ DS/ 23 March 2015
-----	--	-----------------------

2.4	DS to provide the consortium with the names and contacts details for a single key person at each of the organisations in the wider group 2 stake holders to be engage with as part of work stream 2. The group 2 stakeholders would have a vested interest in P2 including trade organisations such as RenewableUK, REA, Energy UK, IDNO representative body, NGET, Ofgem, DECC, the HSE and others as necessary.	DS/ DS/ 23 March 2015
-----	---	-----------------------

Programme

2.5	The updated P2 review programme is to be presented at the next monthly meeting on 27 March.	CM/CM/27 March 2015
-----	---	---------------------



Appendix C Risk Register

Use this page to register all risk factors currently known. Use a scale of 1- 5 (highest) to indicate probability and consequence for each factor.

Sort list to identify top 5 risks

Id	RBS	Risk description	P	C	Score	Last period	Action	Responsible
3	Project Management	Timescales slip on work streams and project end date or work cannot be completed within timescales	3	4	12		PM will work with ENA and team to revise the programme where possible.	PM
4	Technical	Work stream outputs do not deliver the expected results	2	4	8		PM and team will work with ENA to address any such issues as they occur.	PM
5	Technical	Data is delayed or unavailable (for techno-economic model)	2	3	6		All consortium members to make PM aware of issues. PM to assist with data from stakeholders.	PM
6	Project Management	Working together is difficult as partners are physically remote	2	2	4		PM to hold regular meetings with consortium partners to review any issues.	PM
1	External	Access to Stakeholders	1	3	3		Liaise closely with ENA, make sure process is transparent (robust stakeholder engagement process)	PM
7	Organizational	Insufficient resource or expertise within consortium to undertake work	1	3	3		Team includes duplicate resources	PM
8			0	0	0			

Risk register embedded file, used for amendments.



Risk Register V
001.xlsx





About DNV GL

Driven by our purpose of safeguarding life, property and the environment, DNV GL enables organizations to advance the safety and sustainability of their business. We provide classification and technical assurance along with software and independent expert advisory services to the maritime, oil and gas, and energy industries. We also provide certification services to customers across a wide range of industries. Operating in more than 100 countries, our 16,000 professionals are dedicated to helping our customers make the world safer, smarter and greener.