

ENGINEERING RECOMMENDATION P2 REVIEW

# Monthly Progress Report to 28 February 2016

DCRP P2 WG

**Report No.:** 16011094/PROG 13, Rev. 001

**Document No.:** 16011094/PROG 13

**Date:** 29/02/2016



Project name:	Engineering Recommendation P2 Review	DNV GL Energy Advisory
Report title:	Monthly Progress Report to 28 February 2016	PSP UK
Customer:	DCRP P2 WG	Palace House
	6th Floor, Dean Bradley House	3 Cathedral Street
	52 Horseferry Road	London
	London	SE1 9DE
	SW1P 2AF	Tel: +44 (0) 203 170 8165
Contact person:	D Spillet	04478894
Date of issue:	29/02/2016	
Project No.:	16011094	
Organisation unit:	EA UK	
Report No.:	16011094/PROG 13, Rev. 001	
Document No.:	16011094/PROG 13	

**Objective:**

This document reports on the monthly progress made by the Consortium for the P2 review project. Progress is reported on each of the work streams that are presently active including:

- estimated progress so far
- forecast time to complete and deliver
- issues encountered
- forecast of potential issues or risks
- forecast of any changes in scope
- Target progress for next month.

The report also includes the latest revision of overall P2 Review project programme (phase 1), the up dated outstanding actions register and the latest version of the general risk register.

The programmed dates for future progress reports are summarised below:

13	Thursday 3 March 2016	Monday 29 February 2016
14	Wednesday 23 March 2016	Friday 18 March 2016
15	Wednesday 20 April 2016	Friday 15 April 2016
16	Wednesday 25 May 2016	Friday 20 May 2016
17	Thursday 23 June 2016	Friday 17 June 2016
18	Wednesday 27 July 2016	Friday 22 July 2016

Rev. No.	Date	Reason for Issue	Prepared by
001	29/02/2016	Consortium monthly progress reporting	C MacKenzie



## Table of contents

1	ACTIVE WORK STREAMS .....	3
2	ACTIVE WORK STREAM SUMMARIES .....	4
2.1	Estimated progress	4
2.2	Forecast time to complete and deliver	5
2.3	Issues encountered	6
2.4	Forecast of potential issues or risks	7
2.5	Forecast of any changes in scope	8
2.6	Target progress for next month	9
3	P2 REVIEW PROJECT PROGRAMME.....	11
4	OUTSTANDING ACTIONS REGISTER.....	12
5	RISK REGISTER.....	13

### Appendices

Appendix A	Project Program
Appendix B	Outstanding actions Register
Appendix C	General Risk Register

## 1 ACTIVE WORK STREAMS

The active work streams and sub work streams are highlighted in Table 1 along with those work streams that are complete or have still to commence.

Work stream/sub-work stream	Deliverable	Activity Status
<b>Work Stream 1</b> -Project Initiation	Issue of initiation paper	Completed.
<b>Work Stream 2</b> - Assessment of P2/6 and Identifying Options for Reform		Nearing completion
<b>WS2.0</b> Stakeholder interviews (intimate)	A summary report covering key highlights from the stakeholder engagement/interview activities.	Complete
<b>WS2.1</b> Framework for assessing security performance and measures and characteristic network designs	Framework for the development of future network design standards	Nearing completion
<b>WS2.2</b> Service quality and cost effectiveness of the delivered to consumers by the present network design practises	Summary report that will feed into the 'options' milestone report	Nearing completion
<b>WS2.3</b> Risk associated with asset replacement, common mode failures and high impact events	Summary report that will feed into the 'options' milestone report	Nearing completion
<b>WS2.4</b> Impact of Smart Grid technologies on service quality risk profile	Summary report that will feed into the 'options' milestone report	Nearing completion
<b>WS2.5</b> Assessment of impacts of alternative control and operation strategies on security of supply	Summary report that will feed into the 'options' milestone report	Nearing completion
<b>WS2.6.</b> Loss inclusive design of distribution networks and impact on security of supply	Summary report that will feed into the 'options' milestone report	Nearing completion
<b>WS2.7:</b> Alignment of security of supply standard in distribution networks with other codes and schemes	Summary report that will feed into the 'options' milestone report	Complete
<b>WS2.9:</b> Options for future development of distribution network standard including 1st Iteration of the Techno economic Model	Summary report that will feed into the 'options' milestone report	Complete
<b>Work Stream 3</b> - P2/6 Options Report	P2/6 Options Report	Ongoing
<b>Work Stream 5</b> Stakeholder Engagement Report: Workshop	Stakeholder Workshop Report.	Ongoing
<b>Work Stream 6</b> - Formal Strategy Consultation for P2/6	Formal Strategy Consultation Paper for P2/6	Started
<b>Work Stream 7</b> – Detailed review and analysis	Tabulated view of all question responses and actions to be taken with regards to final Phase 1 Report.	Still to start
<b>Work Stream 8</b> - Phase 1 report	Phase 1 final report	Still to start
<b>Work Stream 9</b> - Programme work for Phase 2	Work programme for Phase 2 – project plan and supporting documentation	Still to start

Table 1 Summary of Active Work Streams

## 2 ACTIVE WORK STREAM SUMMARIES

### 2.1 Estimated progress

For all active work streams the following table shows the estimated progress this month and the overall progress to date including the estimated percentage completion and key milestones achieved or tasks completed or a brief account of progress.

Work Stream	% completion last month	% completion this month	Key milestones achieved or tasks completed or brief account of progress
WS1	50	100	<ul style="list-style-type: none"> <li>Completed 1 May 2015.</li> </ul>
WS2.0	98	100	<ul style="list-style-type: none"> <li>Completed 12 Jan 2016 with issue of final report.</li> </ul>
WS 2.1	98	98	<ul style="list-style-type: none"> <li>Draft report covering WS2.1 to WS2.6 works issued by Imperial College on 10 Nov 2015 to all DCRP P2 WG members for review and comment.</li> <li>WG member comments due back 18 Dec 2015. Final comments from WG were received 11 Jan 2016.</li> <li>Imperial College provided workshop on addressing comments on 18 Dec 2015.</li> <li>Imperial College provide additional report elements on 11 Jan 2016.</li> <li>New extended summary provided on 4 Feb covering comments on draft report and new studies. Also used to update WS2.9 options report moving to WS3 options report.</li> <li>Final report nearing completion.</li> </ul>
WS2.2	98	98	<ul style="list-style-type: none"> <li>See comments for WS2.1.</li> </ul>
WS2.3	98	98	<ul style="list-style-type: none"> <li>See comments for WS2.1.</li> </ul>
WS2.4	98	98	<ul style="list-style-type: none"> <li>See comments for WS2.1.</li> </ul>
WS2.5	98	98	<ul style="list-style-type: none"> <li>See comments for WS2.1.</li> </ul>

WS2.6	98	98	<ul style="list-style-type: none"> <li>See comments for WS2.1.</li> </ul>
WS2.7	100	100	<ul style="list-style-type: none"> <li>Complete and final report issued.</li> </ul>
WS2.9	65	100	<ul style="list-style-type: none"> <li>Completed on 11 Jan 2016 with issue of draft report (now moves to WS3 to finalise the options report).</li> </ul>
WS3	10	60	<ul style="list-style-type: none"> <li>All WG member comments on draft options report received and addressed. Near final version of WS3 options report issued to ENA on 22 Feb.</li> </ul>
WS5	20	40	<ul style="list-style-type: none"> <li>Preparation for Industry event on 9 March, event agenda and flier, invitation and list of invitees complete. Slide packs started.</li> <li>ENA has organised venue, set up event web site and issued invitations.</li> </ul>
WS6	0	5	<ul style="list-style-type: none"> <li>Planning of consultation documents and questions started.</li> </ul>

Table 2 Summary of active works tream progress

## 2.2 Forecast time to complete and deliver

The following table shows the forecast time to complete and deliver the active work streams.

Work Stream	Forecast calander weeks to complete	Comments
WS1	Completed on 1 May 2015.	
WS2	Targeting 1 Mar 2016 (1 week)	Note that issue of the WS2.9 draft options report should signify the end of WS2 with the development of the report into a finalised version ready for issue to the wider industry carried out under WS3. Noted that WS2.1 to 2.6 Imperial quantitative analysis report is still being updated with substantial comments from WG members requiring substantial additional studies to enhance the final report. Hence completion date was previously revised to 25 Jan 2016. However, still awaiting completion of Imperial WS2.1 to 2.6 report. Imperial indicate that they have carried out further additional studies to address some report comments from the WG. Target date revised to 1 Mar 2016, 5 weeks behind last target date of 25 Jan 2016.

WS2.0	Completed on 12 January 2016.	
WS2.1	Targeting 1 Mar 2016 (1 week)	Report was released as draft on 10 Nov (2 weeks late). Programme required WG comments by 30 Nov. At Nov WG meeting this was pushed back to 18 Dec. New extended summary provided on 4 Feb covering comments on draft report and new studies. Imperial College is carrying out additional studies to enhance the report. New target date 1 Mar 2016, 4 weeks behind last target date of 1 Feb 2016.
WS2.2	Targeting 1 Mar 2016 (1 week)	See comments for WS2.1.
WS2.3	Targeting 1 Mar 2016 (1 week)	See comments for WS2.1.
WS2.4	Targeting 1 Mar 2016 (1 week)	See comments for WS2.1.
WS2.5	Targeting 1 Mar 2016 (1 week)	See comments for WS2.1.
WS2.6	Targeting 1 Mar 2016 (1 week)	See comments for WS2.1.
WS2.7	Completed.	
WS2.9	Completed	Completed on 11 Jan 2016 with issue of draft report (now moves to WS3 to finalise the report).
WS3	1 weeks (2 weeks behind)	Based on latest programme. 2 weeks behind programme. 1 week delay receiving comments from WG, 1 week delay in Consortium addressing all comments and reissuing the report.
WS5	2 weeks	Based on latest programme
WS6	7 weeks	Based on latest programme

Table 3 Summary of active work stream forecast time to complete

## 2.3 Issues encountered

The following table shows the **recent** issues encountered and estimated delay caused for each active work stream along with potential options to mitigate delays where possible.

Work Stream	Issue encountered	Delay caused	Proposed mitigation	Forecast reduction in delay due to mitigation
WS2.1 to 2.6	Imperial report covering W2.1 to 2.6 issued on 10 Nov 2015. Comments were programmed to be back by 30 Nov. However, at WG meeting in Nov the group agreed to extend the date for comment to 18 Dec.	Overall delay 12 weeks to WS2.1 to 2.6 report.	Development of the WS2.9 report based on input from the draft Imperial report. WS2.9 report updated using the interim new summary from the Imperial report issued on 4 Feb. This has minimised any delay developing the WS2.9	

	Christmas period meant work on revising report was delayed to the new year. Imperial has received a large volume of comments and is carrying out additional studies to finalise the report.		report into the WS3 options report.	
WS3	Delayed receipt of WG comments on WS2.9 draft options report to then develop into WS3 options report. Comments due back on 22 Jan 2016. Last set of comments received 1 Feb. Start to revising the report delayed by 1 week. Consortium took an additional week to issue new draft of report due to internal response delays to some comments.	2 week delay overall so far.	Asked WG to focus on agreeing executive summary and provide consolidated WG comments to minimise further delays in finalising the report. Ready for WS 5 and WS 6.	

Table 4 Summary of active work stream issues encountered

## 2.4 Forecast of potential issues or risks

A forecast of potential issues or risks impacting on delivery timescales, outputs agreed or quality of outputs for each active work stream are recorded in the following table. The table also contains potential options to mitigate any such impacts where possible.

Work Stream	Forecast Issue/Risk	Impact of Risk/Issue	Proposed mitigation	Forecast reduction in impact due to mitigation
WS3	WG slow to review the near final WS3 options report issued on 22 Feb and provide a set of final consolidated comments in order	Possible 4 to 8 weeks based on past performance.	ENA and DCRP chair to manage stakeholder response timelines and provide consolidated final changes to the report with a focus on the executive summary.	



	that the report can be finalised and release to the industry. This is based on responses to other reviews in the project to date.			
WS5	WS3 options report not ready for release prior to the stakeholder event on 9 March 2016.	Industry not informed of option report contents.	<p>In this case the workshop content will be more focussed on information dissemination than feedback. WS3 report will be released after the stakeholder event as part of the formal consultation process in WS6. Note that the Consortium is already working on the basis that the WS3 report will not be ready in terms of preparation for the WS5 stakeholder event.</p> <p>If the WS3 report is delayed past the WS5 event on 9 March due to issues with the WG agreeing the final WS3 options report the the start of the WS6 formal consultation could be delayed. The Consortium will work with the WG to assist resolve any disagreements to finalise the WS3 options report or review how the WS6 consultation could commence without final agreement.</p>	Avoid delaying the workshop and further programme delay.

Table 5 Summary of active work stream forecast potential issues or risks

## 2.5 Forecast of any changes in scope

The following table includes a forecast of any potential changes in scope for each active work stream that would require discussions with the DCRP P2 WG regarding an agreed change in scope or a budget variation.

Work Stream	Forecast scope change	Reason for change	Cost of potential scope change
WS1	None to report		
WS2	Additional PM effort due to programme delays from late receipt of data and DNO questionnaire responses and interview dates.	Overall P2 programme delay of 5 months, estimated 3.5 months due to delays in receiving RRP data which was outside of the Consortium control. The remaining time has been a mixture of WG and Consortium delays. This will result in additional management and reporting costs due to the programme extension from end of January 2016 until the programme is complete.	The forecast programme has slipped by five months, 3.5 months of this delay has been outside of the Consortium's control. The Consortium has submitted a revised variation request based on project management costs for half the overall delay period, 2.5 months rather than the full 3.5 months.

Table 6 Summary of active work stream forecast scope changes

## 2.6 Target progress for next month

The following table includes a forecast of the intended progress to be made in the next month based on the progress so far.

Work Stream	Planned work targets
WS1	Completed.
WS2.0	Completed.
WS2.1	Finalise the WS2.1 to 2.6 report based on WG member comments and completion of additional studies to enhance the final report. Target date for completion is 1 Mar 2016.
WS2.2	See WS2.1.
WS2.3	See WS2.1.
WS2.4	See WS2.1.
WS2.5	See WS2.1.
WS2.6	See WS2.1.
WS2.7	Complete
WS2.9	Complete
WS3.0	Target is to have the final WS3 options report agreed with WG prior to WS5 event on 9 March. This is dependent on receiving final consolidated comments from the



	WG.
WS5	Consortium to prepare presentations for Industry event on 9 March. Workshop to be completed and any industry feedback from collated.
WS6	Construct and issue the formal consultation paper.

Table 7 Summary of target progress for next month.



### **3 P2 REVIEW PROJECT PROGRAMME**

Based on progress to date and forecast completion times, the latest forecast delivery programme is included in Appendix A. Appendix A includes the original programme at the commencement of the project in January 2015 along with the revised programme agreed between the consortium members on 19 June followed a further programme forecast made at the beginning of August 2015. The August revised programme reflects the data gathering issues encountered and the estimated time required completing the WS2 peer reviews at key stages.

The Nov 17 revised programme considered the delays to issuing the WS2.9 draft option report that through WS3 will become the final option report for issue to the wider industry prior to the WS5 industry workshop covering the WS3 options report. WS3 did commence with a WG workshop at the October 27 monthly WG meeting and the WS3 near final options report was issued to the WS on 22 Feb 2016 for finalising.

At the Dec 18<sup>th</sup> 2015 WG meeting the WS5 stakeholder event was confirmed by ENA as 9 March 2016. Based on this date the programme was revised in January 2016 and is included in Appendix A.



## **4 OUTSTANDING ACTIONS REGISTER**

The outstanding actions register is provided in Appendix B.



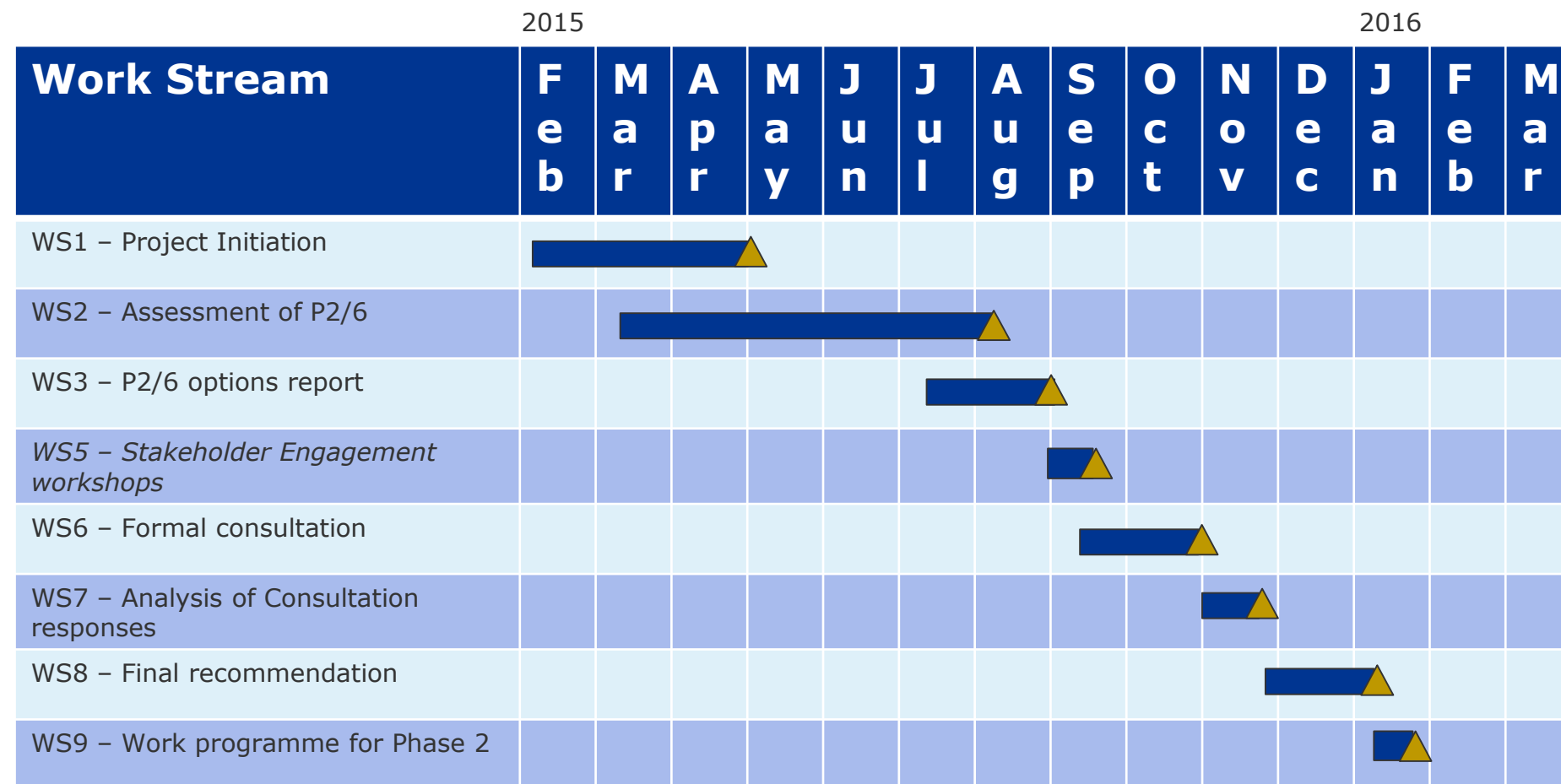
## 5 RISK REGISTER

The latest generic register of risks to programme delivery and mitigating controls is provided in Appendix C. The detailed risks and mitigation measures are provided in Table 5 in section 2.4.



## **Appendix A      Project Programme**

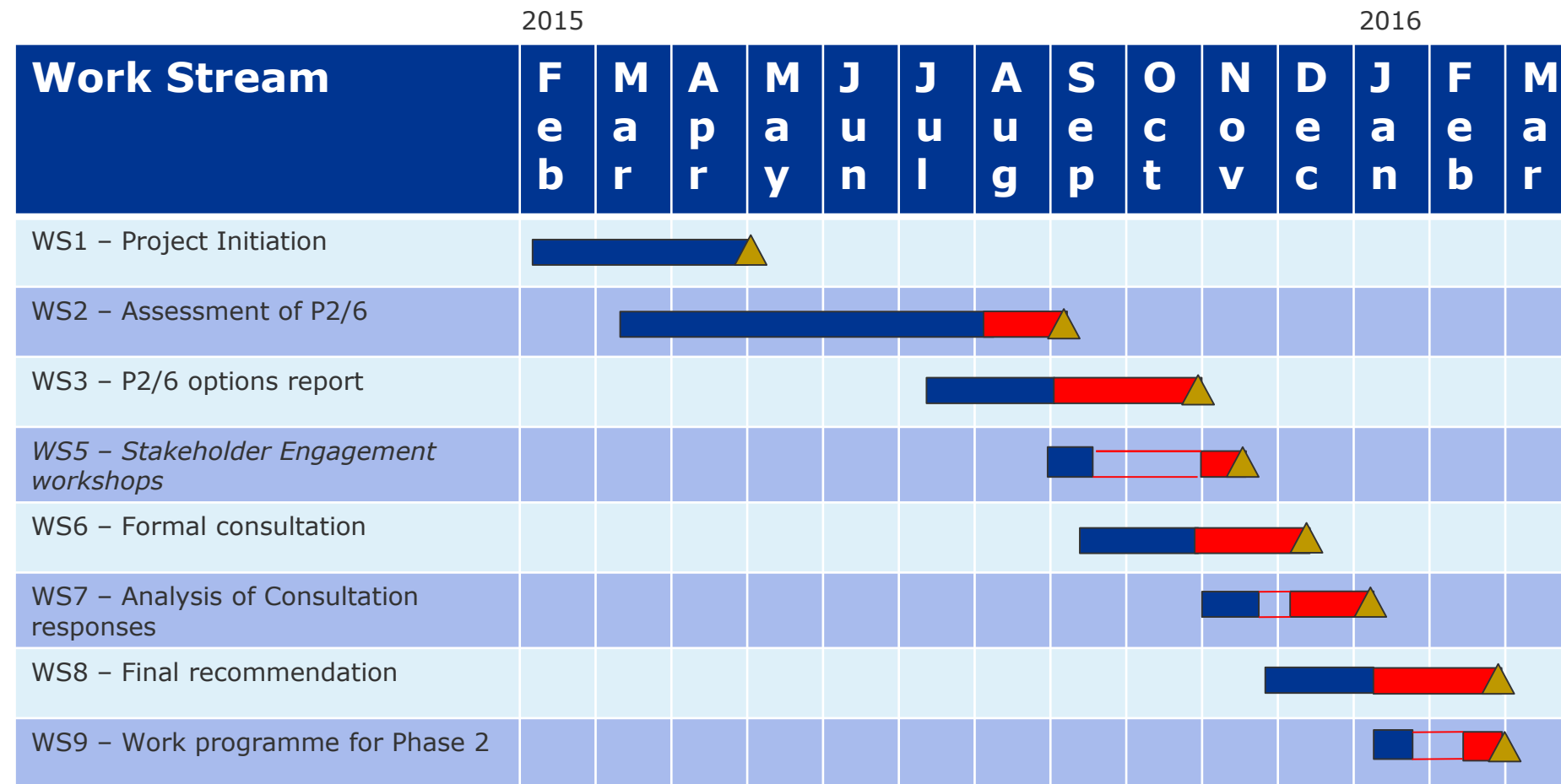
The original (January 2015) high level summary programme is shown below.



▲ = defined deliverable

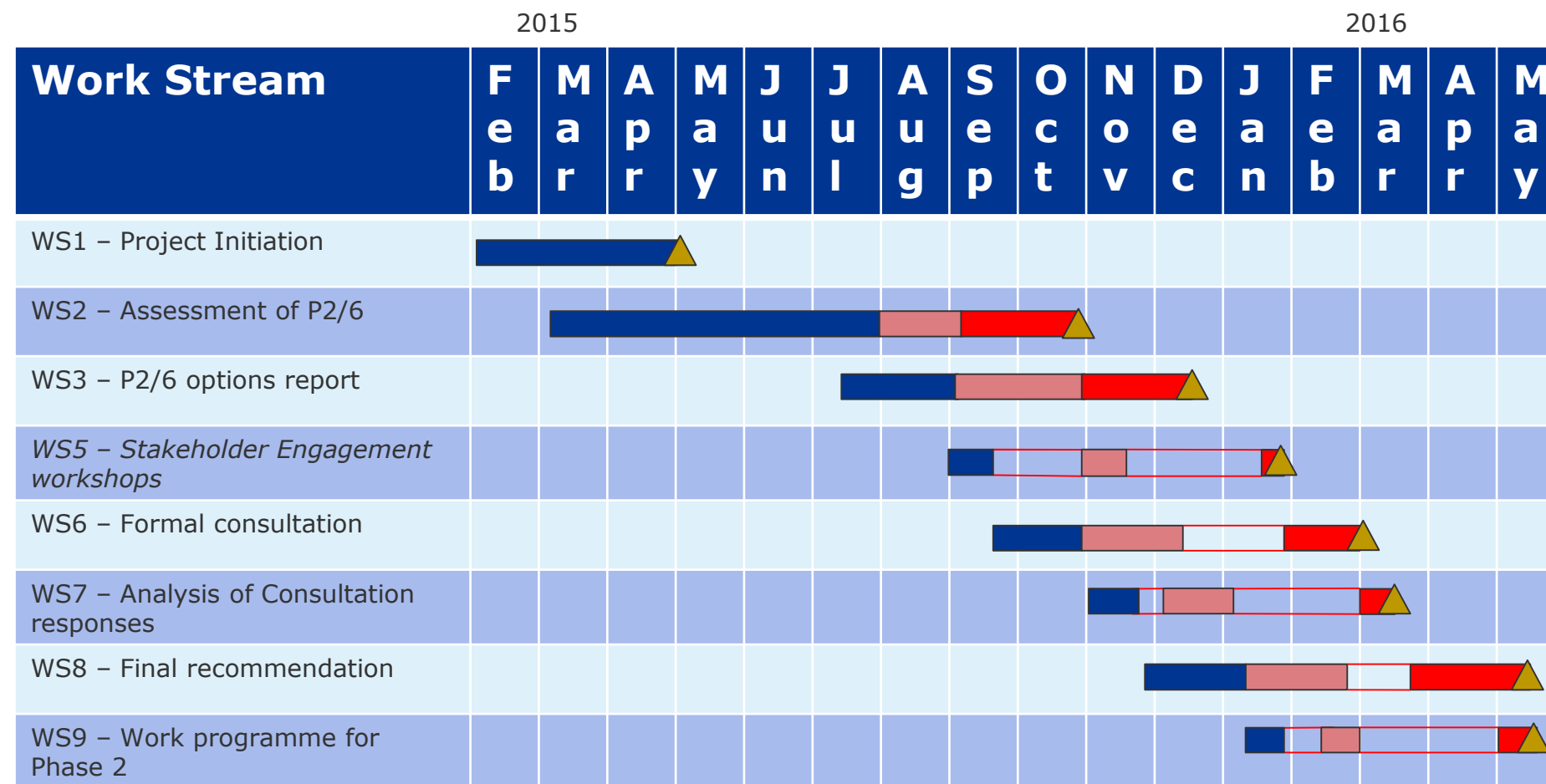


The programme review carried out on June 19 2015 has resulted in the revised programme below. Revisions are coloured red.



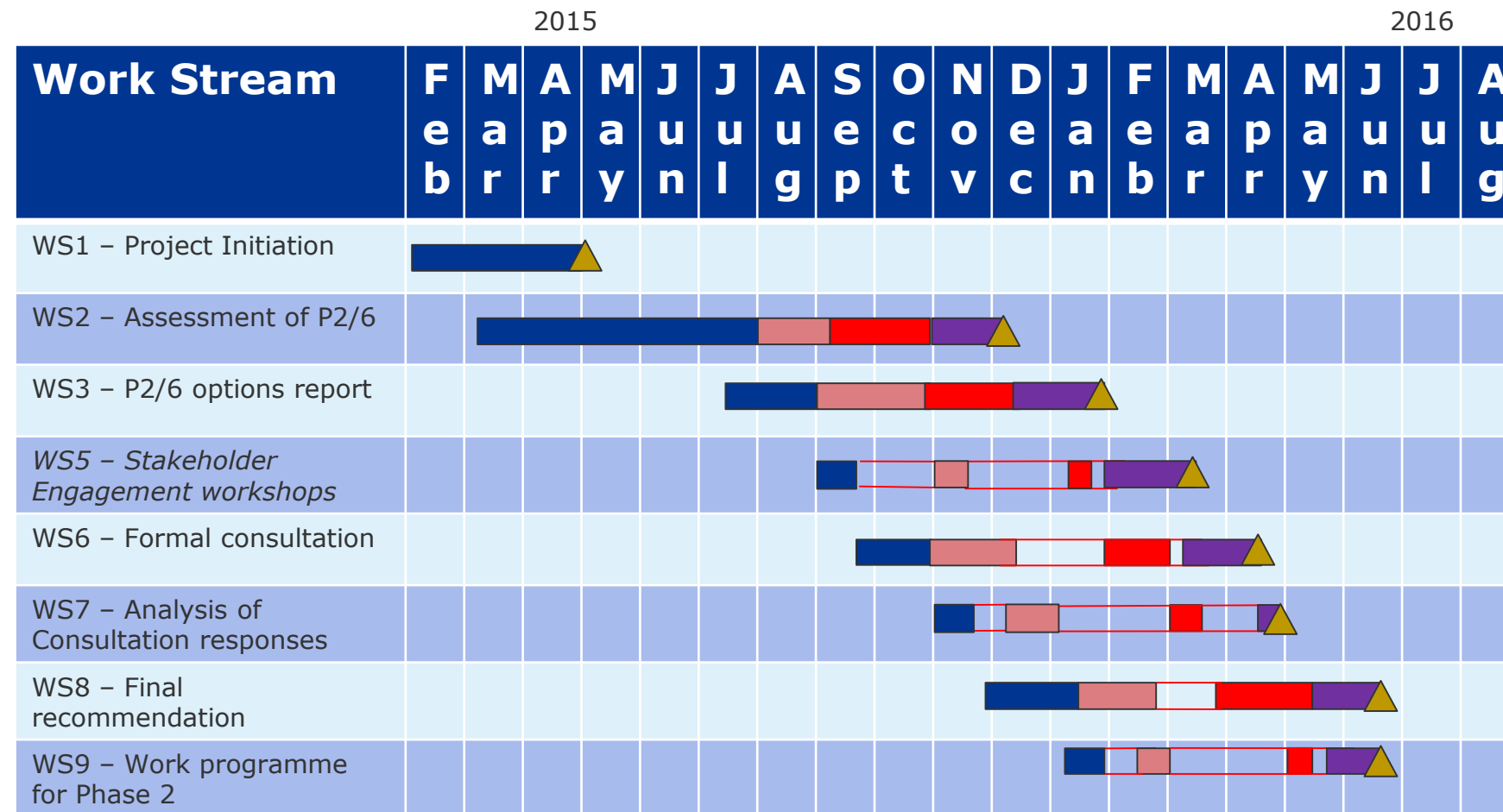
▲ = defined deliverable

The programme review carried out in August 2015 has resulted in the revised programme below. The June revisions are coloured pink and the August revisions are coloured red.



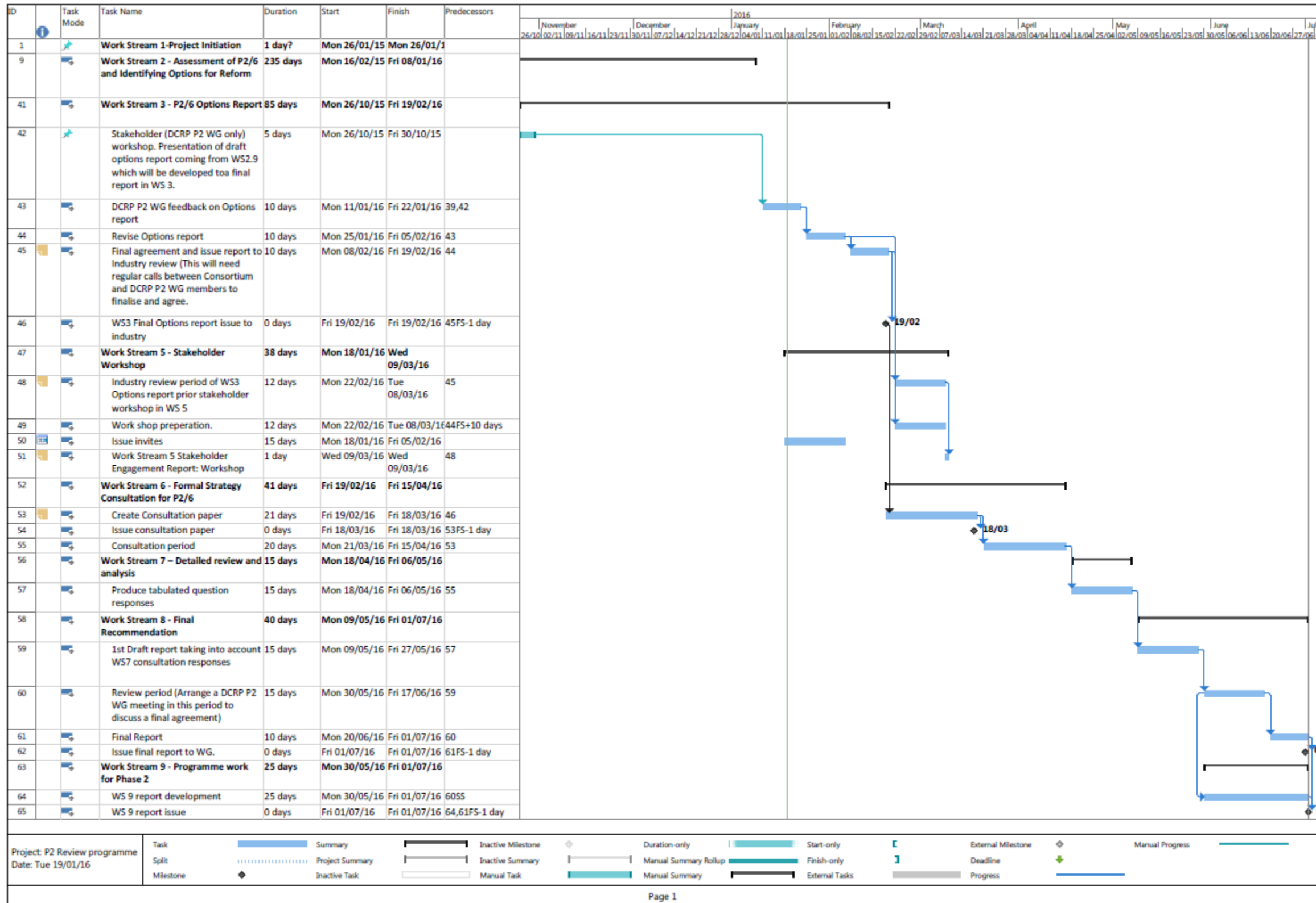
▲ = defined deliverable

The programme review carried out in November 2015 has resulted in the revised programme below. The June programme revisions are coloured pink, the August revisions are coloured red and the November revisions are coloured purple.



▲ = defined deliverable

The programme review carried out in January 2016 has resulted in the revised remaining programme below.





## **Appendix B      Outstanding Actions Register**

Outstanding actions following meeting on 18 December 2015.

11.1	Note that in the WS2.9 options report comment will be required on the uncertainty of discount rates and time horizons of CBA analysis. Also that the present regulatory regime does not recognise uncertainty and hence may require changes. This would be a risk to how CBA's are done. RD to have a look at this issue for the WS2.9 Options report.	RD/3 Dec 2015.  Meeting 12. Outstanding. <b>Meeting 13. RD will address this point in the next draft of the options report. RD by 5 Feb 2016.</b>
11.2	Noted that Smart Grid Form WS2 looked at real option value modelling. RD to consider this for the WS2.9 options report.	RD/3 Dec 2015. Meeting 12. Outstanding. <b>Meeting 13. RD will address this point in the next draft of the options report. RD by 5 Feb 2016. Action Completed.</b>
12.1	Regarding the £10bn to £18bn potential saving of the "ideal answer" in the Imperial report, GS is to provide some guidance on potential timescales this could be over. Since savings from the model are based on load growth it was suggested that the NG FES load growth scenarios may be a useful guide to provide some timescale context in the final report due on 11 Jan 2016.	GS/11 Jan 2016 <b>Meeting 13. IC released an interim statement by email on 5 Jan 2016 covering this point. The final draft of their WS2.1 to 2.6 report due out on 2 Feb 2016 will be updated accordingly.</b> <b>Action remains on GS for 2 Feb 2016. Action complete.</b>
12.4	Regarding the subject of peer review discussed, GS is to make clear what Imperial modelling work used for the P2 review has previously been used and reviewed by others, and what associated papers have been published.	GS/11 Jan 2016  <b>Meeting 13. GS confirmed that this had been addressed and would be in the final draft of their WS2.1 to 2.6 report due out on 2 Feb 2016. Action complete</b>
13.1	GS to ensure that a clear explanation of the "N" terminology for fractional redundancy is included at key points in the IC report e.g. the executive summary to ensure the reader understand the concept and will understand the report.	<b>Action on GS/ 2 Feb 2016</b>
13.2	SC to provide some DNO projected reinforcement costs to the end of ED2 based on the DECC Scenario 3 equivalent (high electrification of heat and transport) for Imperial College to carry out a sanity check and amend or further justify their cost saving estimates.	<b>Action on SC/ 27 Jan 2016.</b>  <b>Action completed by email on 26 Jan 2016.</b>
13.3	Based on the DNO projected reinforcement costs to the end of ED2, based on the DECC Scenario 3 equivalent (high electrification of heat and transport), to be provided by SC, Imperial College is to carry out a sanity check and amend or further justify their cost saving estimates in the next version of their WS2.1 to 2.6 report due out on 2 Feb.	<b>Action on GS/ 2 Feb 2016.</b>
13.4	To allow SC to assist in developing the working for the recommendations in the WS2.9 Options report CMack is to send SC the word version of the report released for comment.	<b>Action on C MacK/ 27 Jan 2016</b>  <b>Action completed by email on 26 Jan 2016.</b>
13.5	SC to review the wording of the recommendations in the WS2.9 draft report and provide suggested amendments.	<b>Action on SC/ 3 Feb 2016.</b>  <b>Outstanding.</b>

13.7

Regarding the WS5 wider stakeholder event on 9 March 2016, all WG member organisations are to ensure their attending delegates register via the ENA online page as soon as possible. Closing date for registration is 3rd march 2016.

**All WG members ASAP.**



**Appendix C      Risk Register**



ENA ER P2 Review

Risk analysis matrix

DNV·GL

Cells contain formulas and will be calculated. Do not update these cells.

Text Blue text represents sample text and should be ignored. This row is not included in graph and sort algorithm.

Acceptable risk score =

Use this page to register all risk factors currently known. Use a scale of 1- 5 (highest) to indicate probability and consequence for each factor.

\*Probability  
\*Consequence  
Risk score = P x C  
Risk score last period

Sort list to identify top 5 risks

Id	RBS	Risk description	P	C	Score	Last period	Action	Responsible
3	Project Management	Timescales slip on work streams and project end date or work cannot be completed within timescales	3	4	12		PM will work with ENA and team to revise the programme where possible.	PM
4	Technical	Work stream outputs do not deliver the expected results	2	4	8		PM and team will work with ENA to address any such issues as they occur.	PM
5	Technical	Data is delayed or unavailable (for techno-economic model)	4	3	12		All consortium members to make PM aware of issues. PM to assist with data from stakeholders.	PM
6	Project Management	Working together is difficult as partners are physically remote	2	2	4		PM to hold regular meetings with consortium partners to review any issues.	PM
1	External	Access to Stakeholders	1	3	3		Liaise closely with ENA, make sure process is transparent (robust stakeholder engagement process)	PM
7	Organizational	Insufficient resource or expertise within consortium to undertake work	1	3	3		Team includes duplicate resources	PM
8	Technical	Peer review process by DCRP P2 WG takes excessive time to reach a point where all DCRP P2 WG members are have with the robustness of data inputs and outputs from the IC analysis.	4	3	12		A P2 sub group has been put in place to speed up the peer review process	DCRP P2 WG chair.
9	External	WG members cannot agree final recommendations for WS3 option report prior to WS5 Industry stake holder event.	3	4	12		WS3 options report could be delivered just after WS5 workshop. However, greater than 15 day delay will delay overall programme.	DCRP P2 WG chair.

Risk register embedded file, used for amendments.



Risk Register V  
004.xlsx



## **About DNV GL**

Driven by our purpose of safeguarding life, property and the environment, DNV GL enables organizations to advance the safety and sustainability of their business. We provide classification and technical assurance along with software and independent expert advisory services to the maritime, oil and gas, and energy industries. We also provide certification services to customers across a wide range of industries. Operating in more than 100 countries, our 16,000 professionals are dedicated to helping our customers make the world safer, smarter and greener.