

ENGINEERING RECOMMENDATION P2 REVIEW

Monthly Progress Report to 13 December 2015

DCRP P2 WG

Report No.: 16011094/PROG 11, Rev. 001

Document No.: 16011094/PROG 11

Date: 15/12/2015



Project name:	Engineering Recommendation P2 Review	DNV GL Energy Advisory
Report title:	Monthly Progress Report to 13 December 2015	PSP UK
Customer:	DCRP P2 WG 6th Floor, Dean Bradley House 52 Horseferry Road London SW1P 2AF	Palace House 3 Cathedral Street London SE1 9DE Tel: +44 (0) 203 170 8165 04478894
Contact person:	D Spillet	
Date of issue:	15/12/2015	
Project No.:	16011094	
Organisation unit:	EA UK	
Report No.:	16011094/PROG 11, Rev. 001	
Document No.:	16011094/PROG 11	

Objective:

This document reports on the monthly progress made by the Consortium for the P2 review project. Progress is reported on each of the work streams that are presently active including:

- estimated progress so far
- forecast time to complete and deliver
- issues encountered
- forecast of potential issues or risks
- forecast of any changes in scope
- Target progress for next month.

The report also includes the latest revision of overall P2 Review project programme (phase 1), the up dated outstanding actions register and the latest version of the general risk register.

The programmed dates for future progress reports are summarised below:

No.	DCRP P2 WG Meeting Date	Issue Monthly Progress Report
11	Friday 18 Dec	Tuesday 15 Dec

Rev. No.	Date	Reason for Issue	Prepared by
001	15/12/2015	Consortium monthly progress reporting	C MacKenzie



Table of contents

1	ACTIVE WORK STREAMS	3
2	ACTIVE WORK STREAM SUMMARIES	4
2.1	Estimated progress	4
2.2	Forecast time to complete and deliver	5
2.3	Issues encountered	8
2.4	Forecast of potential issues or risks	9
2.5	Forecast of any changes in scope	10
2.6	Target progress for next month	10
3	P2 REVIEW PROJECT PROGRAMME	12
4	OUTSTANDING ACTIONS REGISTER	13
5	RISK REGISTER	14

Appendices

Appendix A	Project Program
Appendix B	Outstanding actions Register
Appendix C	General Risk Register

1 ACTIVE WORK STREAMS

The active work streams and sub work streams are highlighted in Table 1 along with those work streams that are complete or have still to commence.

Work stream/sub-work stream	Deliverable	Activity Status
Work Stream 1 -Project Initiation	Issue of initiation paper	Completed.
Work Stream 2 - Assessment of P2/6 and Identifying Options for Reform		Nearing completion
WS2.0 Stakeholder interviews (intimate)	A summary report covering key highlights from the stakeholder engagement/interview activities.	Nearing completion
WS2.1 Framework for assessing security performance and measures and characteristic network designs	Framework for the development of future network design standards	Nearing completion
WS2.2 Service quality and cost effectiveness of the delivered to consumers by the present network design practises	Summary report that will feed into the 'options' milestone report	Nearing completion
WS2.3 Risk associated with asset replacement, common mode failures and high impact events	Summary report that will feed into the 'options' milestone report	Nearing completion
WS2.4 Impact of Smart Grid technologies on service quality risk profile	Summary report that will feed into the 'options' milestone report	Nearing completion
WS2.5 Assessment of impacts of alternative control and operation strategies on security of supply	Summary report that will feed into the 'options' milestone report	Nearing completion
WS2.6. Loss inclusive design of distribution networks and impact on security of supply	Summary report that will feed into the 'options' milestone report	Nearing completion
WS2.7: Alignment of security of supply standard in distribution networks with other codes and schemes	Summary report that will feed into the 'options' milestone report	Complete
WS2.9: Options for future development of distribution network standard including 1st Iteration of the Techno economic Model	Summary report that will feed into the 'options' milestone report	Nearing completion.
Work Stream 3 - P2/6 Options Report	P2/6 Options Report	Started
Work Stream 5 Stakeholder Engagement Report: Workshop	Stakeholder Workshop Report.	Still to start
Work Stream 6 - Formal Strategy Consultation for P2/6	Formal Strategy Consultation Paper for P2/6	Still to start
Work Stream 7 – Detailed review and analysis	Tabulated view of all question responses and actions to be taken with regards to final Phase 1 Report.	Still to start
Work Stream 8 - Phase 1 report	Phase 1 final report	Still to start
Work Stream 9 - Programme work for Phase 2	Work programme for Phase 2 – project plan and supporting documentation	Still to start

Table 1 Summary of Active Work Streams

2 ACTIVE WORK STREAM SUMMARIES

2.1 Estimated progress

For all active work streams the following table shows the estimated progress this month and the overall progress to date including the estimated percentage completion and key milestones achieved or tasks completed or a brief account of progress.

Work Stream	% completion last month	% completion this month	Key milestones achieved or tasks completed or brief account of progress
WS1	50	100	<ul style="list-style-type: none"> Completed 1 May 2015.
WS2.0	98	98	<ul style="list-style-type: none"> The draft report covering the analysis of stakeholder responses to the questionnaire and followup interviews was completed and issued to the ENA on 13 Nov 2015.
WS 2.1	98	98	<ul style="list-style-type: none"> Draft report covering WS2.1 to WS2.6 works issued by Imperial College on 10 Nov 2015 to all DCRP P2 WG members for review and comment. The key conclusions from this report will feed into the WS2.9 draft options report. WG member comments due back 18 Dec 2015. Imperial College has already started work on comments received already from some stakeholders.
WS2.2	98	98	<ul style="list-style-type: none"> Draft report covering WS2.1 to WS2.6 works issued by Imperial College on 10 Nov 2015 to all DCRP P2 WG members for review and comment. The key conclusions from this report will feed into the WS2.9 draft options report. WG member comments due back 18 Dec 2015. Imperial College has already started work on comments received already from some stakeholders.
WS2.3	98	98	<ul style="list-style-type: none"> Draft report covering WS2.1 to WS2.6 works issued by Imperial College on 10 Nov 2015 to all DCRP P2 WG members for review and comment. The key conclusions from this report will feed into the WS2.9 draft options report. WG member comments due back 18 Dec 2015. Imperial College has already started work on comments received already from some stakeholders.

WS2.4	98	98	<ul style="list-style-type: none"> • Draft report covering WS2.1 to WS2.6 works issued by Imperial College on 10 Nov 2015 to all DCRP P2 WG members for review and comment. The key conclusions from this report will feed into the WS2.9 draft options report. • WG member comments due back 18 Dec 2015. • Imperial College has already started work on comments received already from some stakeholders.
WS2.5	98	98	<ul style="list-style-type: none"> • Draft report covering WS2.1 to WS2.6 works issued by Imperial College on 10 Nov 2015 to all DCRP P2 WG members for review and comment. The key conclusions from this report will feed into the WS2.9 draft options report. • WG member comments due back 18 Dec 2015. • Imperial College has already started work on comments received already from some stakeholders.
WS2.6	98	98	<ul style="list-style-type: none"> • Draft report covering WS2.1 to WS2.6 works issued by Imperial College on 10 Nov 2015 to all DCRP P2 WG members for review and comment. The key conclusions from this report will feed into the WS2.9 draft options report. • WG member comments due back 18 Dec 2015. • Imperial College has already started work on comments received already from some stakeholders.
WS2.7	100	100	<ul style="list-style-type: none"> • Complete and final report issued.
WS2.9	30	65	<ul style="list-style-type: none"> • Key conclusions from WS2.1 to 2.6 and the qualitative analysis from WS2.0 have been incorporated into the draft report. The draft report is with the NERA and Imperial college for review and finalising the conclusions.

Table 2 Summary of active works tream progress

2.2 Forecast time to complete and deliver

The following table shows the forecast time to complete and deliver the active work streams.

Work Stream	Forecast calendar weeks to complete	Comments
WS1	Completed on 1 May 2015.	
WS2	4 (11 Jan 2015)	Working to revised programme presented in the Nov progress report. Note that issue of the WS2.9 draft options report signifies the end of WS2 with the development of the report into a finalised version ready for issue to the wider industry carried out under WS3.
WS2.0	2 (23 Dec 2015)	<p>Nov 2015 rather than releasing the report as final with no opportunity for comment by the WG, the report was released as draft on 13 Nov (2 weeks late) a further 6 weeks has been added to the forecast to allow WG members to comment back and for the report to be issued as a final draft.</p> <p>Comments were due back 30 Nov, however, no comments received to date. If no comments are received the report will be issued as final on 23 Dec 2015.</p>
WS2.1	4 (11 Jan 2016) Date still to be agreed by Imperial College subject to level of comments received.	<p>Nov 2015 rather than releasing the report as final with no opportunity for comment by the WG, the report was released as draft on 10 Nov (2 weeks late) a further 7 weeks has been added to the forecast to allow WG members to comment back and for the report to be issued as a final draft.</p> <p>Programme required comments by 30 Nov. At Nov WG meeting this was pushed back to 18 Dec. Estimated that Imperial will turn around comments and issue final by 11 Jan 2016.</p>
WS2.2	4 (11 Jan 2016) Date still to be agreed by Imperial College subject to level of comments received.	<p>Nov 2015 rather than releasing the report as final with no opportunity for comment by the WG, the report was released as draft on 10 Nov (2 weeks late) a further 7 weeks has been added to the forecast to allow WG members to comment back and for the report to be issued as a final draft.</p> <p>Programme required comments by 30 Nov. At Nov WG meeting this was pushed back to 18 Dec. Estimated that Imperial will turn around comments and issue final by 11 Jan 2016.</p>
WS2.3	4 (11 Jan 2016) Date still to be agreed by Imperial College subject to level of comments received.	<p>Nov 2015 rather than releasing the report as final with no opportunity for comment by the WG, the report was released as draft on 10 Nov (2 weeks late) a further 7 weeks has been added to the forecast to allow WG members to comment back and for the report to be issued as a final draft.</p> <p>Programme required comments by 30 Nov. At Nov</p>

		WG meeting this was pushed back to 18 Dec. Estimated that Imperial will turn around comments and issue final by 11 Jan 2016.
WS2.4	4 (11 Jan 2016) Date still to be agreed by Imperial College subject to level of comments received.	Nov 2015 rather than releasing the report as final with no opportunity for comment by the WG, the report was released as draft on 10 Nov (2 weeks late) a further 7 weeks has been added to the forecast to allow WG members to comment back and for the report to be issued as a final draft. Programme required comments by 30 Nov. At Nov WG meeting this was pushed back to 18 Dec. Estimated that Imperial will turn around comments and issue final by 11 Jan 2016.
WS2.5	4 (11 Jan 2016) Date still to be agreed by Imperial College subject to level of comments received.	Nov 2015 rather than releasing the report as final with no opportunity for comment by the WG, the report was released as draft on 10 Nov (2 weeks late) a further 7 weeks has been added to the forecast to allow WG members to comment back and for the report to be issued as a final draft. Programme required comments by 30 Nov. At Nov WG meeting this was pushed back to 18 Dec. Estimated that Imperial will turn around comments and issue final by 11 Jan 2016.
WS2.6	4 (11 Jan 2016) Date still to be agreed by Imperial College subject to level of comments received.	Nov 2015 rather than releasing the report as final with no opportunity for comment by the WG, the report was released as draft on 10 Nov (2 weeks late) a further 7 weeks has been added to the forecast to allow WG members to comment back and for the report to be issued as a final draft. Programme required comments by 30 Nov. At Nov WG meeting this was pushed back to 18 Dec. Estimated that Imperial will turn around comments and issue final by 11 Jan 2016.
WS2.7	Completed.	
WS2.9	1 (23 Dec 2015) Date dependent on reaching agreement within the consortium on key messages. May be delayed into new year.	This has been delayed by delays to other WS2 sub work streams as reported last month. The draft WS2.9 options report will be issued this coming month. The draft report issue signifies the end of WS2 with the development of the report into a finalised version ready for issue to the wider industry carried out under WS3.

Table 3 Summary of active work stream forecast time to complete

2.3 Issues encountered

The following table shows the issues encountered and estimated delay caused for each active work stream along with potential options to mitigate delays where possible.

Work Stream	Issue encountered	Delay caused	Proposed mitigation	Forecast reduction in delay due to mitigation
WS2	WS2.0 DNO data collection and interviews.	Estimated to be 3.5 months.	Data collection and interviews now complete.	Cannot be estimated.
WS2.7	Delays in receiving comments from some key WG members on WS2.7 report. Additional time spent reviewing and discussing these comments to close them out.	Initial deadline for WG comments was 9 Sept, extended to 29 Sept for some members. Final comments on draft received on 20 Oct. Final report issued on 23 Oct to WG members. Further comments still being reviewed with at least 1 member up to 6 Nov. Programme for WS2.7 extended by approximately 8 weeks.	All comments finally received by 20 Oct 2015. WS2.7 report now complete ready for updates to WS2.9 report.	
WS2.1 to 2.6	Consortium late delivering report covering these workstreams. This was due to the volume of work.	2 weeks to overall programme.		
WS2.0	Consortium late delivering report covering this workstream. This was due to internal re-drafting requirements.	2 weeks to overall programme.		
WS2.0	Reports covering WS2.0, stakeholder qualitative analysis	Still awaiting comments. If none received the report		

	was issued 13 Nov with comments expected back by 30 Nov in line with revised programme.	will be issued as final on 22 Dec 2015. 2 weeks.		
WS2.1 to 2.6	Imperial report covering SW2.1 to 2.6 issued on 10 Nov 2015. Comments were programmed to be back by 30 Nov. However, at WG meeting in Nov the group agreed to extend the date for comment to 18 Dec.	Due to run into Christmas period this will delay programme by 4 weeks.		
WS2.9	Draft WS2.9 options report was programmed for 7 Dec. The consortium has pushed this back to allow visibility of comments coming back on the Imperial S2.1 to 2.6 report.	Aiming to issue by 23 Dec. Date dependent on reaching agreement within the consortium on key messages. May be delayed into new year.		

Table 4 Summary of active work stream issues encountered

2.4 Forecast of potential issues or risks

A forecast of potential issues or risks impacting on delivery timescales, outputs agreed or quality of outputs for each active work stream are recorded in the following table. The table also contains potential options to mitigate any such impacts where possible.

Work Stream	Forecast Issue/Risk	Impact of Risk/Issue	Proposed mitigation	Forecast reduction in impact due to mitigation
WS3	Some WG members slow to review and respond to the WS2.9 draft options report to develop this into the WS3 final options report for release to the industry. This is based on responses to other reviews in	Possible 4 to 8 weeks based on past performance.	ENA and DCRP chair to manage stakeholder response timelines.	

	the project to date.			
--	----------------------	--	--	--

Table 5 Summary of active work stream forecast potential issues or risks

2.5 Forecast of any changes in scope

The following table includes a forecast of any potential changes in scope for each active work stream that would require discussions with the DCRP P2 WG regarding an agreed change in scope or a budget variation.

Work Stream	Forecast scope change	Reason for change	Cost of potential scope change
WS1	None to report		
WS2	Additional PM due to programme delays from late receipt of data and DNO questionnaire responses and interview dates.	Overall P2 programme delay of 4.5 – 5 months estimated due to delays in receiving RRP data and also revising forward programme based on experience to date. This will result in additional management and reporting costs due to the programme extension from end of January 2016 until the programme is complete.	The forecast programme has slipped by nearly five months outside of the Consortium's control. An estimated cost for additional project management to continue the programme has been provided to the ENA. At the request of the DCRP P2 WG and ENA, this is to be formalised and presented by letter to the ENA.

Table 6 Summary of active work stream forecast scope changes

2.6 Target progress for next month

The following table includes a forecast of the intended progress to be made in the next month based on the progress so far.

Work Stream	Planned work targets
WS1	Completed.
WS2.0	Finalise and issue the WS2.0 report based on WG member comments received. Based on revised closing date for comments of 18 Dec 2015.
WS2.1	Finalise the WS2.1 to 2.6 report based on WG member comments. Based on revised closing date for comments of 18 Dec 2015.

WS2.2	Finalise the WS2.1 to 2.6 report based on WG member comments. Based on revised closing date for comments of 18 Dec 2015.
WS2.3	Finalise the WS2.1 to 2.6 report based on WG member comments. Based on revised closing date for comments of 18 Dec 2015.
WS2.4	Finalise the WS2.1 to 2.6 report based on WG member comments. Based on revised closing date for comments of 18 Dec 2015.
WS2.5	Finalise the WS2.1 to 2.6 report based on WG member comments. Based on revised closing date for comments of 18 Dec 2015.
WS2.6	Finalise the WS2.1 to 2.6 report based on WG member comments. Based on revised closing date for comments of 18 Dec 2015.
WS2.7	Complete, no further work will be done on this task.
WS2.9	NERA and Imperial to review the draft options report and agree final conclusion. The report will then be issued to the WG.

Table 7 Summary of target progress for next month.

3 P2 REVIEW PROJECT PROGRAMME

Based on progress to date and forecast completion times, the latest forecast delivery programme is included in Appendix A. Appendix A includes the original programme at the commencement of the project in January 2015 along with the revised programme agreed between the consortium members on 19 June followed a further programme forecast made at the beginning of August 2015. The August revised programme reflects the data gathering issues encountered and the estimated time required completing the WS2 peer reviews at key stages.

Note, based on progress to 18 Oct there was a potential 2 week delay in the programme.

The programme has been reviewed in November and considers all delays to date with some recognition of potential future delays indicated in Table 5 as the programme moves into WS3. The Nov 17 revised programme considers the delays to issuing the WS2.9 draft option report that through WS3 will become the final option report for issue to the wider industry prior to the WS5 industry workshop covering the WS3 options report. WS3 did commence with a WG workshop at the October 27 monthly WG meeting and the WS2.9 draft options report is expected out by 7 Dec 2015. The WS5 industry workshop is programmed between 22 Feb and 11 March 2016 with the actual date to be confirmed by the ENA events team. The remaining WS3 programme and preparatory elements of WS5 programme consider the above constraining dates in developing the revised programme.

Based on the DCRP P2 WG meeting on 24 Nov 2015, the ENA is looking to programme the WS5 event week starting 7 March 2016 to accommodate the revised date of 18th Dec 2015 for comment on the Imperial WS2.1 to 2.6 report. The programme will be reviewed again in January 2016.



4 OUTSTANDING ACTIONS REGISTER

The outstanding actions register is provided in Appendix B.



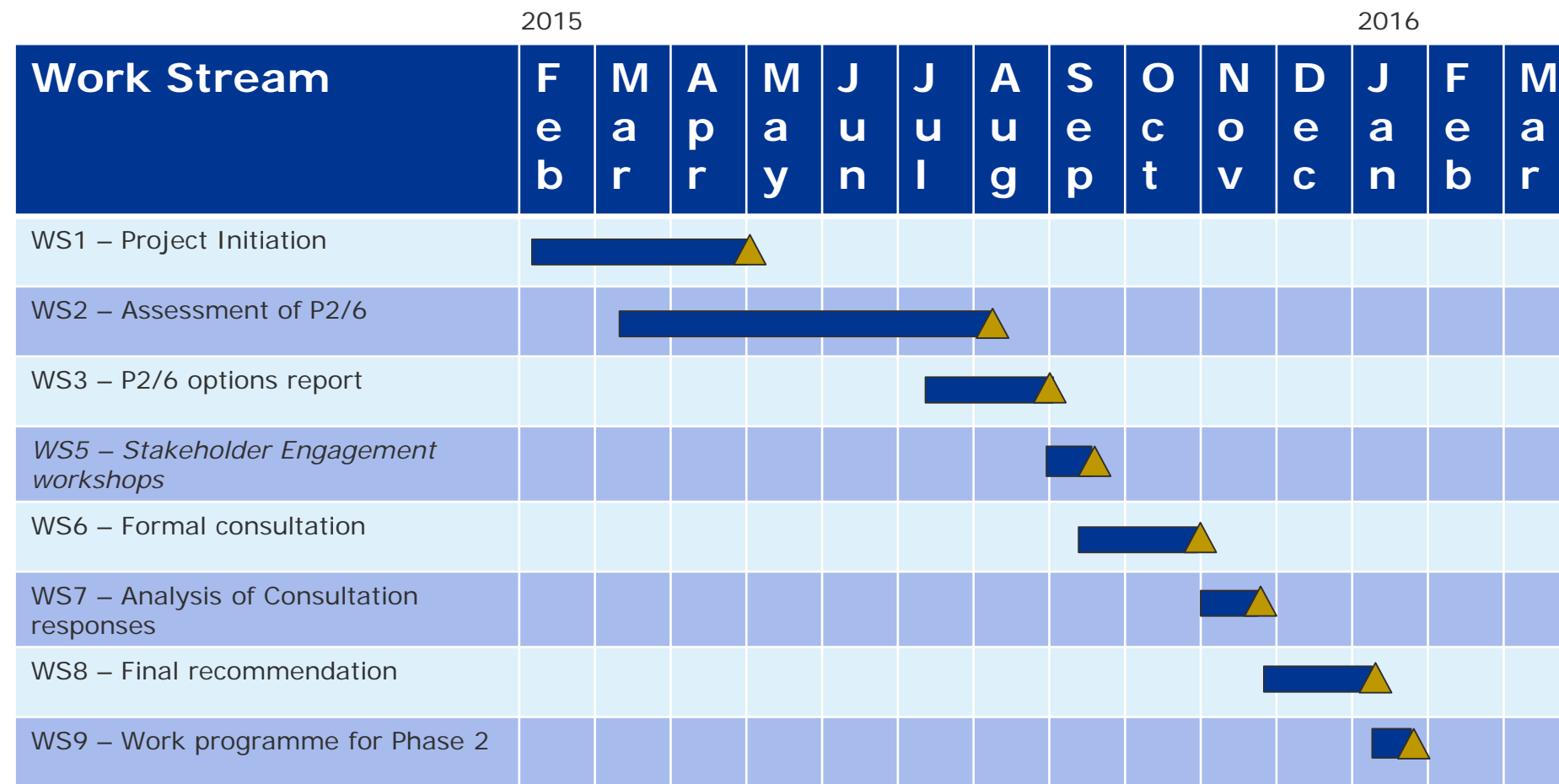
5 RISK REGISTER

The latest generic register of risks to programme delivery and mitigating controls is provided in Appendix C. The detailed risks and mitigation measures are provided in Table 5 in section 2.4.



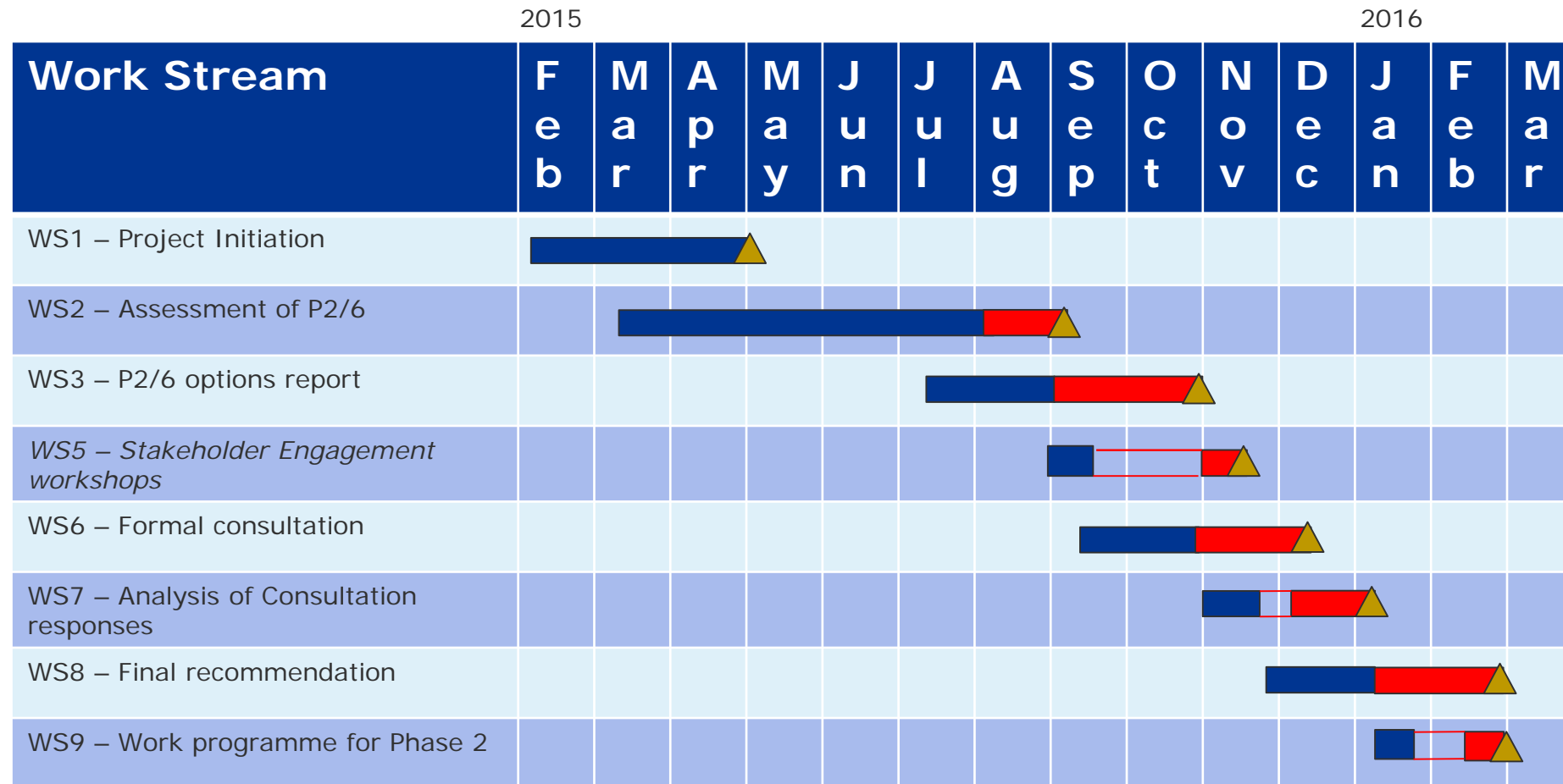
Appendix A Project Programme

The original (January 2015) high level summary programme is shown below.



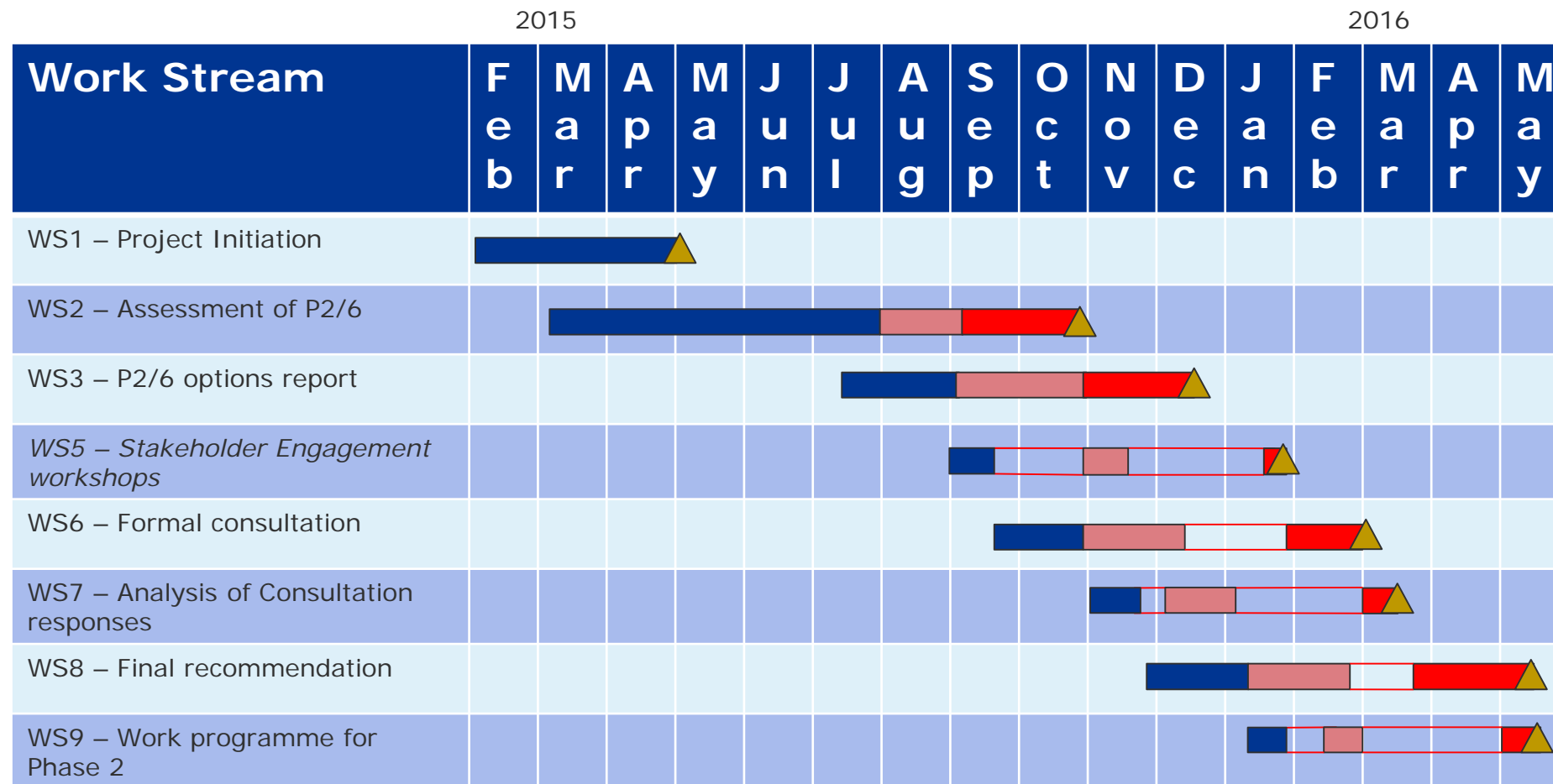
▲ = defined deliverable

The programme review carried out on June 19 2015 has resulted in the revised programme below. Revisions are coloured red.



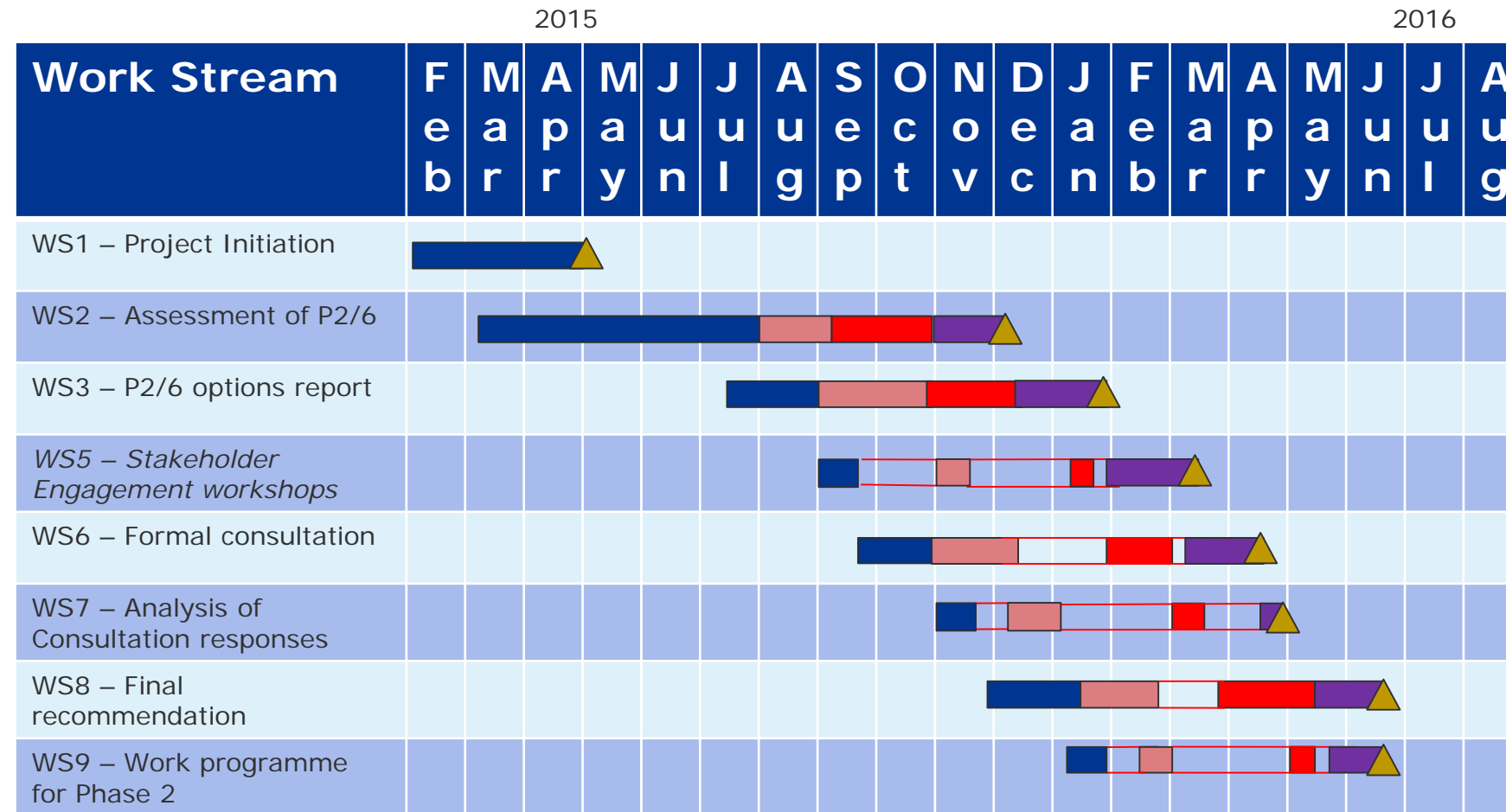
▲ = defined deliverable

The programme review carried out in August 2015 has resulted in the revised programme below. The June revisions are coloured pink and the August revisions are coloured red.



▲ = defined deliverable

The programme review carried out in November 2015 has resulted in the revised programme below. The June programme revisions are coloured pink, the August revisions are coloured red and the November revisions are coloured purple.



▲ = defined deliverable





Appendix B Outstanding Actions Register

Outstanding actions following meeting on 24 November 2015.



Action Description	Action/Responsible/Due Date
3 Consortium to consider impact of WS7 information provided by DCRP P2 WG on P2 review. WS 2 activity for NERA and Imperial.	GS, RD /Consortium PM/during workstream 2. Ongoing
DCRP P2 WG to check with Ofgem how interactions with WS7 may be handled.	Ongoing (meeting 6) SC to check with Ofgem (GE) how the interactions with WG7 may be handled with the P2/6 review. (Meeting 7) SC has spoken with GE and GE is happy to act as link to WS7 works.
8.7 SC provided high level feedback to the materials presented to the review meeting on 20 July (SC's email was circulated to WG members on 31 July 2015 by CMack, see Appendix A for SC's email) – other WG members were asked to review and agree that SC's comments cover their own organisations' view or provide their own feedback to Goran's presentation. To date most DCRP P2 WG members have not responded.	All DCRP P2 WG members to indicate their agreement that SC's feedback covers their own organisation's views or to provide their own feedback by 4 Sept 2015. Meeting 9. CMack has not seen any evidence of this. SC to chase responses from other DNOs. Meeting 10, DS asked that CMack circulate the SC comments to all WG members again and that if any WG members wish to add to or disagree with SC's comments they should send their responses to SC/DS/CMack by Friday 30 Oct. A NIL response will be taken as agreement with SC's comments. CMack has recirculated SC's comments on 28 Oct 2015. Action on WG members to respond by 30 Oct 2015. RD as soon as feasible. Meeting 11. Outstanding. RD is happy for BW to release the WS2.7 report to his trade members, once final version circulated to WG members (Report is ready for circulation now). AB by 13 Nov 2015. Meeting 11. Outstanding. Meeting 11. Outstanding. Discussed with Frank Gordon at REA. DS/ by 6 Nov 2015. Meeting 11. Outstanding.
10.2 RD is to advise BW when he can release the WS2.7 report to his trade members.	RD as soon as feasible.
10.3 AB to contact BW and advise who at REA he discussed the questionnaire response with.	AB by 13 Nov 2015.
10.4 SC suggested that a couple of conference call slots are arranged during the review process of the WS2.9 and Imperial supporting quantitative analysis report to allow members to compare notes. DS to conduct a doodle pole of members for a suitable date and time before and after the 24 Nov WG meeting. CMack suggest that based	DS/ by 6 Nov 2015.



Action Description

Action/Responsible/Due Date

- on the expected dates for issue of the Imperial report and WS2.9 report that DS targets weeks commencing 16 Nov and 30 Nov.
- 10.7 With regards to the WS2.7 report now clarifying the distinction between a deterministic standard that targets average reliability, and one that sets de minimis requirements, RD is to provide with more guidance on this difference.
- RD/ 6 Nov 2015. This is done in the final version of the WS2.7 report. Report to be circulated to WG members.
- Meeting 11. Outstanding.
- 11.1 Note that in the WS2.9 options report comment will be required on the uncertainty of discount rates and time horizons of CBA analysis. Also that the present regulatory regime does not recognise uncertainty and hence may require changes. This would be a risk to how CBA's are done. RD to have a look at this issue for the WS2.9 Options report.
- RD/3 Dec 2015.
- 11.2 Noted that Smart Grid Form WS2 looked at real option value modelling. RD to consider this for the WS2.9 options report.
- RD/3 Dec 2015.
- 11.4 Subject to the date agreed for return of comments on the Imperial draft quantitative analysis report, CMacK is to provide a revised programme.
- CMacK/by next WG meeting subject to previous action.



Appendix C Risk Register



Cells contain formulas and will be calculated. Do not update these cells.

Text Blue text represents sample text and should be ignored. This row is not included in graph and sort algorithm.

Acceptable risk score =

Use this page to register all risk factors currently known. Use a scale of 1- 5 (highest) to indicate probability and consequence for each factor.

*Probability
*Consequence
Risk score = P x C
Risk score last period

Sort list to identify top 5 risks

Id	RBS	Risk description	P	C	Score	Last period	Action	Responsible
3	Project Management	Timescales slip on work streams and project end date or work cannot be completed within timescales	3	4	12		PM will work with ENA and team to revise the programme where possible.	PM
4	Technical	Work stream outputs do not deliver the expected results	2	4	8		PM and team will work with ENA to address any such issues as they occur.	PM
5	Technical	Data is delayed or unavailable (for techno-economic model)	4	3	12		All consortium members to make PM aware of issues. PM to assist with data from stakeholders.	PM
6	Project Management	Working together is difficult as partners are physically remote	2	2	4		PM to hold regular meetings with consortium partners to review any issues.	PM
1	External	Access to Stakeholders	1	3	3		Liaise closely with ENA, make sure process is transparent (robust stakeholder engagement process)	PM
7	Organizational	Insufficient resource or expertise within consortium to undertake work	1	3	3		Team includes duplicate resources	PM
8	Technical	Peer review process by DCRP P2 WG takes excessive time to reach a point where all DCRP P2 WG members are have with the robustness of data inputs and outputs from the IC analysis.	4	3	12		A P2 sub group has been put in place to speed up the peer review process	DCRP P2 WG chair.

Risk register embedded file, used for amendments.



Risk Register V
003.xlsx





About DNV GL

Driven by our purpose of safeguarding life, property and the environment, DNV GL enables organizations to advance the safety and sustainability of their business. We provide classification and technical assurance along with software and independent expert advisory services to the maritime, oil and gas, and energy industries. We also provide certification services to customers across a wide range of industries. Operating in more than 100 countries, our 16,000 professionals are dedicated to helping our customers make the world safer, smarter and greener.