

ENGINEERING RECOMMENDATION P2 REVIEW

Monthly Progress Report to 26 April 2015

DCRP P2 WG

Report No.: 16011094/PROG 3, Rev. 001

Document No.: 16011094/PROG 3

Date: 5/5/2015



Project name:	Engineering Recommendation P2 Review	DNV GL Energy Advisory
Report title:	Monthly Progress Report to 26 April 2015	PSP UK
Customer:	DCRP P2 WG	Palace House
	6th Floor, Dean Bradley House	3 Cathedral Street
	52 Horseferry Road	London
	London	SE1 9DE
	SW1P 2AF	Tel: +44 (0) 203 170 8165
Contact person:	D Spillet	04478894
Date of issue:	5/5/2015	
Project No.:	16011094	
Organisation unit:	EA UK	
Report No.:	16011094/PROG 3, Rev. 001	
Document No.:	16011094/PROG 3	

Objective:

This document reports on the monthly progress made by the Consortium for the P2 review project. Progress is reported on each of the work streams that are presently active including:

- estimated progress so far
- forecast time to complete and deliver
- issues encountered
- forecast of potential issues or risks
- forecast of any changes in scope
- Target progress for next month.

The report also includes the latest revision of overall P2 Review project programme (phase 1), the up dated outstanding actions register and the latest version of the risk register.

The programmed dates for future progress reports are summarised below:

No.	DCRP P2 WG Meeting Date	Issue Monthly Progress Report
4	Wednesday 27 May	Friday 22 May
5	Monday 22 June	Friday 20 June
6	Wednesday 29 July	Friday 24 July
7	Wednesday 19 Aug	Friday 14 Aug
8	Wednesday 23 Sept	Friday 18 Sept
9	Wednesday 27 Oct	Friday 23 Oct
10	Wednesday 25 Nov	Friday 20 Nov
11	Friday 18 Dec	Friday 11 Dec

Rev. No.	Date	Reason for Issue	Prepared by
001	5/5/2015	Consortium monthly progress reporting	C MacKenzie



Table of contents

1	ACTIVE WORK STREAMS	3
2	ACTIVE WORK STREAM SUMMARIES	4
2.1	Estimated progress	4
2.2	Forecast time to complete and deliver	6
2.3	Issues encountered	6
2.4	Forecast of potential issues or risks	7
2.5	Forecast of any changes in scope	7
2.6	Target progress for next month	8
3	P2 REVIEW PROJECT PROGRAMME.....	9
4	OUTSTANDING ACTIONS REGISTER.....	10
5	RISK REGISTER.....	11

Appendices

Appendix A	Project Program
Appendix B	Outstanding actions Register
Appendix C	Risk Register

1 ACTIVE WORK STREAMS

The active work streams and sub work streams are highlighted in Table 1 along with those work streams that are complete or have still to commence.

Work stream/sub-work stream	Deliverable	Activity Status
Work Stream 1 -Project Initiation	Issue of initiation paper	Active
Work Stream 2 - Assessment of P2/6 and Identifying Options for Reform		Initial start made.
WS2.0 Stakeholder interviews (intimate)	A summary report covering key highlights from the stakeholder engagement/interview activities.	Started
WS2.1 Framework for assessing security performance and measures and characteristic network designs	Framework for the development of future network design standards	Started
WS2.2 Service quality and cost effectiveness of the delivered to consumers by the present network design practises	Summary report that will feed into the 'options' milestone report	Started
WS2.3 Risk associated with asset replacement, common mode failures and high impact events	Summary report that will feed into the 'options' milestone report	Started
WS2.4 Impact of Smart Grid technologies on service quality risk profile	Summary report that will feed into the 'options' milestone report	Started
WS2.5 Assessment of impacts of alternative control and operation strategies on security of supply	Summary report that will feed into the 'options' milestone report	Started
WS2.6. Loss inclusive design of distribution networks and impact on security of supply	Summary report that will feed into the 'options' milestone report	Started
WS2.7: Alignment of security of supply standard in distribution networks with other codes and schemes	Summary report that will feed into the 'options' milestone report	Initial start made.
WS2.9: Options for future development of distribution network standard including 1st Iteration of the Techno economic Model	Summary report that will feed into the 'options' milestone report	Still to start
Work Stream 3 - P2/6 Options Report	P2/6 Options Report	Still to start
Work Stream 5 Stakeholder Engagement Report: Workshop	Stakeholder Workshop Report.	Still to start
Work Stream 6 - Formal Strategy Consultation for P2/6	Formal Strategy Consultation Paper for P2/6	Still to start
Work Stream 7 – Detailed review and analysis	Tabulated view of all question responses and actions to be taken with regards to final Phase 1 Report.	Still to start
Work Stream 8 - Phase 1 report	Phase 1 final report	Still to start
Work Stream 9 - Programme work for Phase 2	Work programme for Phase 2 – project plan and supporting documentation	Still to start

Table 1 Summary of Active Work Streams

2 ACTIVE WORK STREAM SUMMARIES

2.1 Estimated progress

For all active work streams the following table shows the estimated progress this month and the overall progress to date including the estimated percentage completion and key milestones achieved or tasks completed or a brief account of progress.

Work Stream	% completion last month	% completion this month	Key milestones achieved or tasks completed or brief account of progress
WS1	30	50	<ul style="list-style-type: none"> • Progress report 2 submitted. • DCRP P2 WG meeting 3 completed including minutes. • Stakeholder engagement plan completed. • Workshop 1 covering the plans for the wider stakeholder engagement event on 1 May (workshop 2) completed on 27 March 2015. • Preparations for workshop 2 nearing completion, invitees identified and invited, invitation reminders sent out, PIP completed and sent to invitees and posted on 1 May event web site. Remaining preparation includes finalising event slide deck.
WS2.0	0	20	<ul style="list-style-type: none"> • Consortium meeting to plan key stakeholder interviews held on 8 April. Split into two areas; 1. questions covering Imperials data request for the WS2 quantitative analysis and 2. questions for qualitative analysis required later in WS 2. • Area 1, conference calls set up with DNO members to discuss progress with responding to data request first one completed. Agreed after first call to bring effectively bring forward 1:1 DNO interviews by setting up 1:1 calls between Imperial and DNOs to go through area 1 data request. Initial call with NPG conducted which has led to Imperial re-evaluating data approach for DNOs. Next stage is to set up 1:1 calls with other DNOs to discuss revised approach from Imperial. Two weekly conference call slots also still available for DNOs to dial into to discuss data as a group. • Area 2 the consortium has drafted a questionnaire for qualitative analysis aimed at

			those covering regulation, planning and operation at the DNOs. This is being reviewed and the next step is to issue identified staff at DNOs and follow up with 1:1 calls to go through the questionnaire.
WS 2.1	30	60	<ul style="list-style-type: none"> Imperial College is making good progress setting up the various models required for the various WS2 analysis. Imperial College is now engaged with DNOs in collecting data for the WS2 quantitative analysis as discussed above. On 8th April the consortium discussed, agreed and documented the high level options for P2/6 replacement to be analysed using the assessment framework. Progress has been made on the establishing a set of characteristic network designs. Finalised model for generation driven network investment. Prepared technical questions for the workshop.
WS2.2	0	15	<ul style="list-style-type: none"> Progress has been made on specifying the relevant case studies for estimating the risk profile in present networks which will be carried out once data gathering is completed.
WS2.3	0	15	<ul style="list-style-type: none"> Progress has been made on specifying the relevant case studies for the estimation of the risk associated with asset replacement, common mode failures and high impact events.
WS2.4	0	20	<ul style="list-style-type: none"> Good progress has been made on conducting illustrative case studies using non-network solutions i.e. responsive demand and energy storage. Good progress identifying alternative approaches to assessment of security contribution of non-network solutions has been made.
WS2.5	0	15	<ul style="list-style-type: none"> Progress made on identification of exposure to common mode failures associated with ICT infrastructure. Other aspects of this WS are covered in the questionnaire and interviews presently being developed in WS2.0 Area 2.
WS2.7			<ul style="list-style-type: none"> NERA has started drafting an outline of its report on WS2.7 for internal discussion amongst the Consortium members.

Table 2 Summary of active works tream progress

2.2 Forecast time to complete and deliver

The following table shows the forecast time to complete and deliver the active work streams.

Work Stream	Forecast calendar weeks to complete	Comments
WS1	1, due for completion on 1 May 2015.	Draft stakeholder engagement plan shows Workshop 1 on 27 th March with Workshop 2 on 1 st May. This would complete WS1.
WS2	18	Work is ongoing on WS2.0 and WS2.1 to set up the various models that will be required. WS2 is programmed for completion on 7 th August 2015.
WS2.0	6	This includes covering the Area 1 data questions for the quantitative WS2 analysis which is ongoing and the Area 2 qualitative analysis questionnaires and followup 1:1 calls with DNOs and possibly others.
WS2.1	4	Followind data collection selected case studies will be carried out for illustrative purposes and communication. Two additional weeks are requested to complete this. No impact on the expected completion of overall WS2.
WS2.2	7	Expected to be completed as planned
WS2.3	10	Expected to be completed as planned
WS2.4	11	Expected to be completed as planned
WS2.5	13	Expected to be completed as planned
WS2.6	12	Expected to be completed as planned
WS2.7	10	Work has started on first draft. Second draft will require feedback from WS2.0 questionnaire on Area 2 questions.

Table 3 Summary of active work stream forecast time to complete

2.3 Issues encountered

The following table shows the issues encountered and estimated delay caused for each active work stream along with potential options to mitigate delays where possible.

Work Stream	Issue encountered	Delay caused	Proposed mitigation	Forecast reduction in delay due to mitigation
WS2	WS2.0 DNO data collection and interviews.	None.	Imperial is continuing to work with DNOs and to set up 1:1 calls to gather data for quantitative analysis (Area 1). The questionnaire for interviews with DNO members covering regulation, planning and operation is now being constructed and will shortly be	None required at present.

			circulated to key DNO staff with 1:1 follow up calls then set up.	
--	--	--	---	--

Table 4 Summary of active work stream issues encountered

2.4 Forecast of potential issues or risks

A forecast of potential issues or risks impacting on delivery timescales, outputs agreed or quality of outputs for each active work stream are recorded in the following table. The table also contains potential options to mitigate any such impacts where possible.

Work Stream	Forecast Issue/Risk	Impact of Risk/Issue	Proposed mitigation	Forecast reduction in impact due to mitigation
WS2	Still struggling to agree and receive response to data request list submitted to the DCRP P2 WG on 25/2/2015	Could start to impact on some of the WS2 sub workstreams Delay of 2 weeks is estimated on WS2.1.	Fortnightly conference calls set up for DNO discussions on this topic. 1:1 call with NPG has proved very useful and an improved approach to the data request is being assessed by Imperial using regulatory reporting pack (RRP) data and also 1:1 calls with each DNO are now being set up.	Initial discussions have started and project team may revise approach to data gathering based on RRP to assist DNO's provide data efficiently in a common format.
WS2	Confidentiality issues with DNO data.	Could start to impact on some of the WS2 sub workstreams	This may be an issue with RRP data if it required to go into the public domain. This issue needs to be resolved through further discussions with ENA and DNOs and possibly Ofgem.	None as yet

Table 5 Summary of active work stream forecast potential issues or risks

2.5 Forecast of any changes in scope

The following table includes a forecast of any potential changes in scope for each active work that would require discussions with the DCRP P2 WG regarding an agreed change in scope or a budget variation.

Work Stream	Forecast scope change	Reason for change	Cost of potential scope change
WS1	None to report		
WS2	None to report		

Table 6 Summary of active work stream forecast scope changes

2.6 Target progress for next month

The following table includes a forecast of the intended progress to be made in the next month based on the progress so far.

Work Stream	Planned work targets
WS1	Complete slide pack for 1 May event. Complete 1 May stakeholder event.
WS2.0	Continue to set-up 1:1 calls with the DNOs for Area 1 quantitative analysis data. Complete Area 1 1:1 calls with DNOs. Complete questionnaire for qualitative analysis interviews (Area 2). Set up all Area 2 1:1 interview calls with DNO staff, start to conduct interviews. Plan out interview process for wider stakeholders (non DNO) and start interviews.
WS2.1	Critical review of recent studies on quantifying costs of interruptions and risk measures. Complete set of relevant data. Populate key network types with corresponding range of reliability parameters of network assets needed to assess the network reliability performance. DS2030 workshop informed that diversity of load changes with duration of outage and changes in rating of cables. Modelling will be extended to include these effects. Carry out selected case studies.
WS2.2	Select initial samples of real distribution networks. Evaluate estimated networks reliability performances for initial samples of real and representative distribution networks.
WS2.3	Agree characteristic scenarios for asset replacement, common-mode failures and high impact events.
WS2.4	Complete set of initial case studies demonstrating the impact of distributed energy resources (DER) on security of supply. Continue working on identification of alternative approaches for contribution assessment in case where DER provides other system support services.
WS2.5	Continue working on identification of exposure to common mode failures associated with ICT infrastructure. The consortium questionnaire and interviews will cover other relevant areas of this WS (see WS 2.0 Area 2).
WS2.6	Establish relevant cases and corresponding data for assessing the impact of loss inclusive design on reliability.
WS2.7	NERA will complete the first draft of the WS2.7 report for review by the Consortium members. NERA will commence revisions to the draft report based on (1) feedback from Imperial/DNV, and (2) in light of any stakeholder interviews that have been completed.

Table 7 Summary of target progress for next month.



3 P2 REVIEW PROJECT PROGRAMME

Based on progress to date and forecast completion times, the latest forecast delivery programme is included in Appendix A.



4 OUTSTANDING ACTIONS REGISTER

The outstanding actions register is provided in Appendix B.



5 RISK REGISTER

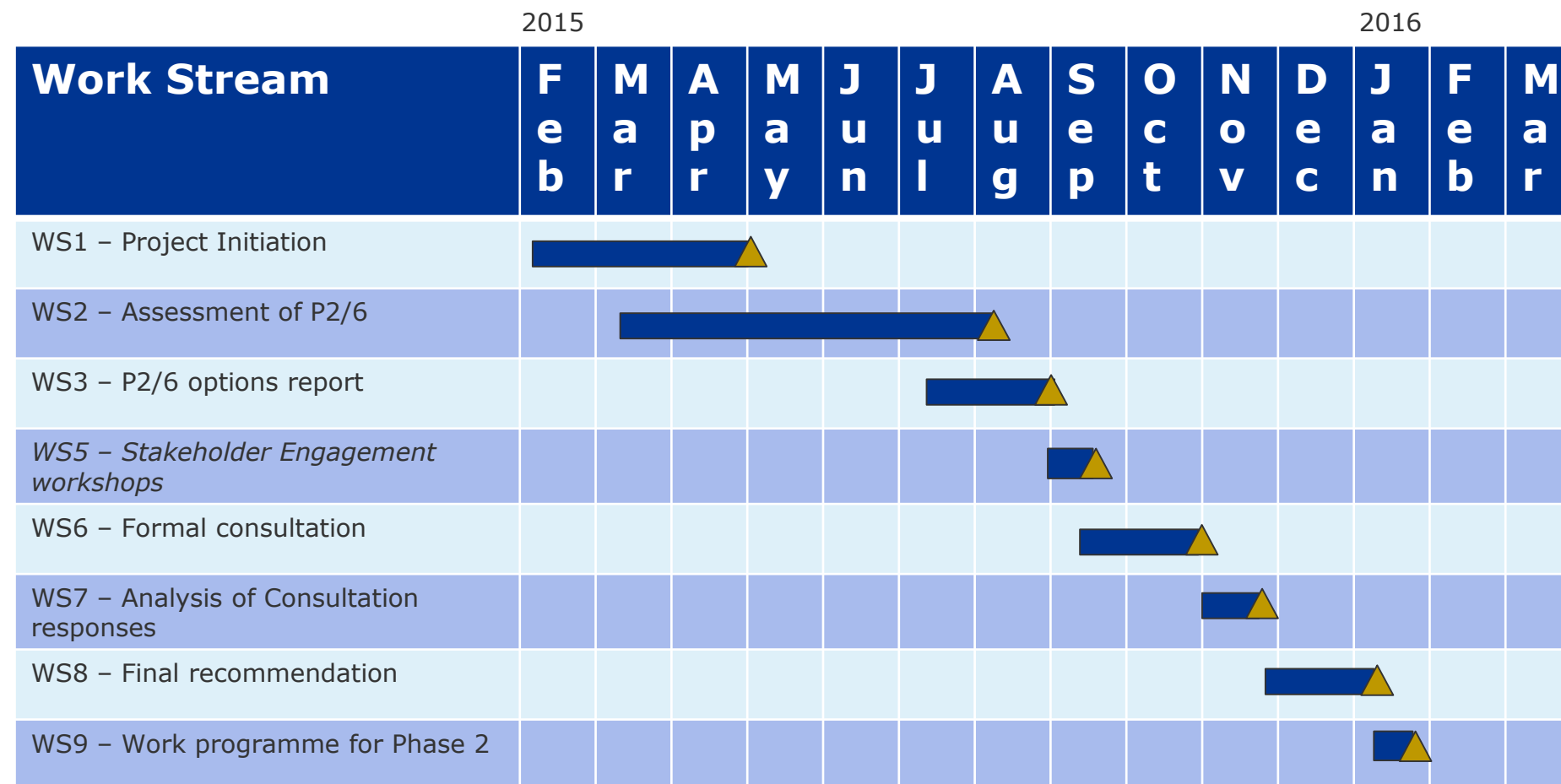
The latest register of risks to programme delivery and mitigating controls is provided in Appendix C.





Appendix A Project Programme

The high level summary programme is shown below.



▲ = defined deliverable





Appendix B Outstanding Actions Register



Action/Responsible/Due Date

Recap on the key P2 study issues

What has changed over the last 18 months

1	Consortium to consider the impact of relevant LCNF projects now they are more mature, special examples could include Electricity North West 's C2C project and DSR related projects in general on the P2 review. WS 2 activity for NERA and Imperial.	GS, RD/Consortium PM/during workstream 2. Ongoing
2	RIIO price control period commences with a new interruption incentive scheme, etc. Consortium to consider impacts during WS 2 techno-economic modelling. WS 2 activity for NERA and Imperial	GS, RD /Consortium PM/during workstream 2. Ongoing
3	Smart Grid Forum WS 7 project, DCRP P2 WG to provide Consortium with update on project outputs that could have an impact on the P2 review. Based on meeting on 26 Feb 2015 MK is to provide the presently available report setting out the WS7 project, followed by a soon to be published report first WS7 report setting out the scope.	The available WS7 report was provided by ENA on 2 March 2015. Action complete. The first WS7 report to be provided by DCRP P2 WG by 30 March 2015 subject to report release date. Ongoing
	Consortium to consider impact of WS7 information provided by DCRP P2 WG on P2 review. WS 2 activity for NERA and Imperial.	GS, RD /Consortium PM/during workstream 2. Ongoing
4	Losses has been raised as a key issue by Ofgem driven by EU directives. Consortium to review and include in techno-economic assessments. WS 2 activity for NERA and Imperial.	GS, RD /Consortium PM/during workstream 2. Ongoing
5	Any issues relating to supply security in the latest ENTSO-E 10 year plan should be considered for potential impact on the P2 review. WS 2 activity for NERA and Imperial.	GS, RD /Consortium PM/during workstream 2. Ongoing

Consortium proposals to conduct the P2 review

11	DCRP P2 WG is to advise any other party that they would wish to peer review the modelling inputs and out puts in anticipation of a public consultation on proposals that may be justified (in part) by evidence produced using Imperial's techno-economic model.	DCRP P2 WG/DS/ by 23 Feb 2015. Outstanding (agreed on 27/3/2015 to leave this open for further discussion with Ofgem would raised this item)
----	--	--

Overall governance

12	Consortium to ensure all corespondance with DCRP P2 WG comes from the Consortium PM to David	All consortium members/Consortium PM/ ongoing.
----	--	---



Action/Responsible/Due Date	
Spillet as the single points of contact in each organisation.	
2.1 Regarding actions not carried out by the DCRP P2 WG, CM is to chase DS to resolve these issues.	CM/CM/ Ongoing
Stakeholder Engagement	
2.3 DS to provide the consortium with the names and contact details of the key individuals at each DNO who should be interviewed directly as part of work stream 2 (i.e. individuals responsible for setting policy for the DNO's network planning teams to follow).	DS/ DS/ 23 March 2015 Ongoing in collaboration with Consortium (awaiting WPD names)

Action/Responsible/Due Date	
3.11 Regarding release of RIIO ED1 cost data agreed that MK would find out if this would be possible and report back.	MK/DS/8 April. Complete, answer was no as we would need to release into public domain.
6.3 Feedback from WG on slide pack	

AOB

DCRP P2 WG members attending the 1 May event should plan to take part in a brief monthly DCRP P2 WG meeting immediately after the event from 3:30pm to approximately 4:30pm.	All DCRP P2 WG members/DS/ 1 May
--	----------------------------------



Appendix C Risk Register



Use this page to register all risk factors currently known. Use a scale of 1- 5 (highest) to indicate probability and consequence for each factor.			*Probability	*Consequence	Risk score = P x C	Risk score last period		
Id	RBS	Risk description	P	C	Score	Last period	Action	Responsible
3	Project Management	Timescales slip on work streams and project end date or work cannot be completed within timescales	3	4	12		PM will work with ENA and team to revise the programme where possible.	PM
4	Technical	Work stream outputs do not deliver the expected results	2	4	8		PM and team will work with ENA to address any such issues as they occur.	PM
5	Technical	Data is delayed or unavailable (for techno-economic model)	2	3	6		All consortium members to make PM aware of issues. PM to assist with data from stakeholders.	PM
6	Project Management	Working together is difficult as partners are physically remote	2	2	4		PM to hold regular meetings with consortium partners to review any issues.	PM
1	External	Access to Stakeholders	1	3	3		Liaise closely with ENA, make sure process is transparent (robust stakeholder engagement process)	PM
7	Organizational	Insufficient resource or expertise within consortium to undertake work	1	3	3		Team includes duplicate resources	PM
8			0	0	0			

Sort list to identify top 5 risks

Risk register embedded file, used for amendments.



Risk Register V
001.xlsx





About DNV GL

Driven by our purpose of safeguarding life, property and the environment, DNV GL enables organizations to advance the safety and sustainability of their business. We provide classification and technical assurance along with software and independent expert advisory services to the maritime, oil and gas, and energy industries. We also provide certification services to customers across a wide range of industries. Operating in more than 100 countries, our 16,000 professionals are dedicated to helping our customers make the world safer, smarter and greener.